

Virginia Department of Forestry



*We protect and develop
healthy, sustainable
forest resources for
Virginians*

Address http://www.ifris.dof.virginia.gov/IFRISv2/ims/default.aspx?layer=Tracts&field=TR_TRACTNUM&value=ALB00064&userId=1810&weekEnd=9/26/2008 Go Links

Dashboard Mapping Reports

Welcome Lawrence Mikkelson!

IFRIS



Mapping Tract Information



Working Tract: ALB00064 Change
Edit Layer: Stands

Layers Edit Map Results Activity Info Plan Info
Feature Editing Upload GPS

Edit Layer: Stands

Polygon Editing Toolbox



– VDOF –

Serving the Commonwealth Since 1914

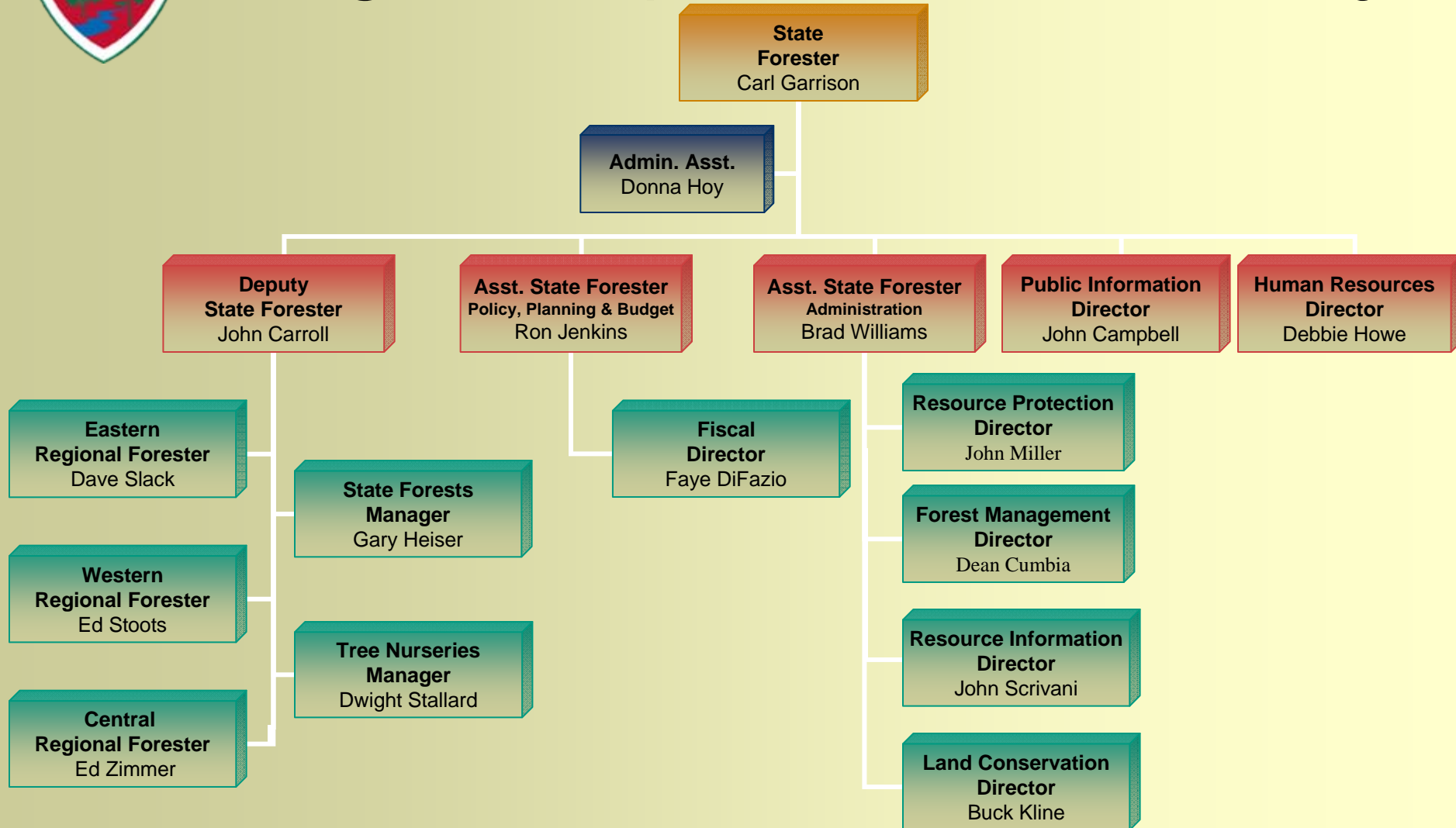
Duties and Responsibilities for 15.7 Million Acres:

- ❖ Wildland Fire Suppression
- ❖ Forest Fire Law Enforcement
- ❖ Timber Harvest Inspections
- ❖ Water Quality Law Enforcement
- ❖ Wildland Fire Training for VFDs
- ❖ Firewise Education for Homeowners
- ❖ Invasive Species
- ❖ Riparian Buffers
- ❖ Forest Management for 377,000 Virginia Landowners
- ❖ Tree Improvement and Research
- ❖ Chesapeake Bay
- ❖ Reforestation of Timberlands
- ❖ Reforestation of Mining Lands
- ❖ Tree Nurseries (self-supporting)
- ❖ 19 State Forests (self-supporting)
- ❖ Tree Planting on Private Lands
- ❖ Forest Health
- ❖ Land Conservation
- ❖ Land-use Planning
- ❖ Conservation Education for Landowners and Students
- ❖ Aerial Spraying on Private Lands
- ❖ Stewardship Plans for Private Lands
- ❖ Urban and Community Forestry
- ❖ Fleet Management
- ❖ Arson Investigations
- ❖ All-weather Hazard Response Teams
- ❖ GIS Mapping for Landowners
- ❖ Wood Product Utilization
- ❖ Alternative Forest Products
- ❖ Biofuels/Bioenergy





Virginia Department of Forestry



Virginia Department of Forestry

State Forests

- 1 Devil's Backbone
- 2 Conway-Robinson
- 3 Whitney
- 4 Paul
- 6 Leecoe
- 8 Midway Place
- 7 Bourassa
- 8 Matthews
- 9 Hawk
- 10 Appomattox-Buckingham
- 11 Cumberland
- 12 Prince Edward Gallion
- 13 Browne
- 14 Zoar
- 16 Chilton Woods
- 18 Crawfords
- 17 Sandy Point
- 18 Channels
- 19 Dragon Run

Regional Offices

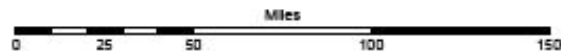
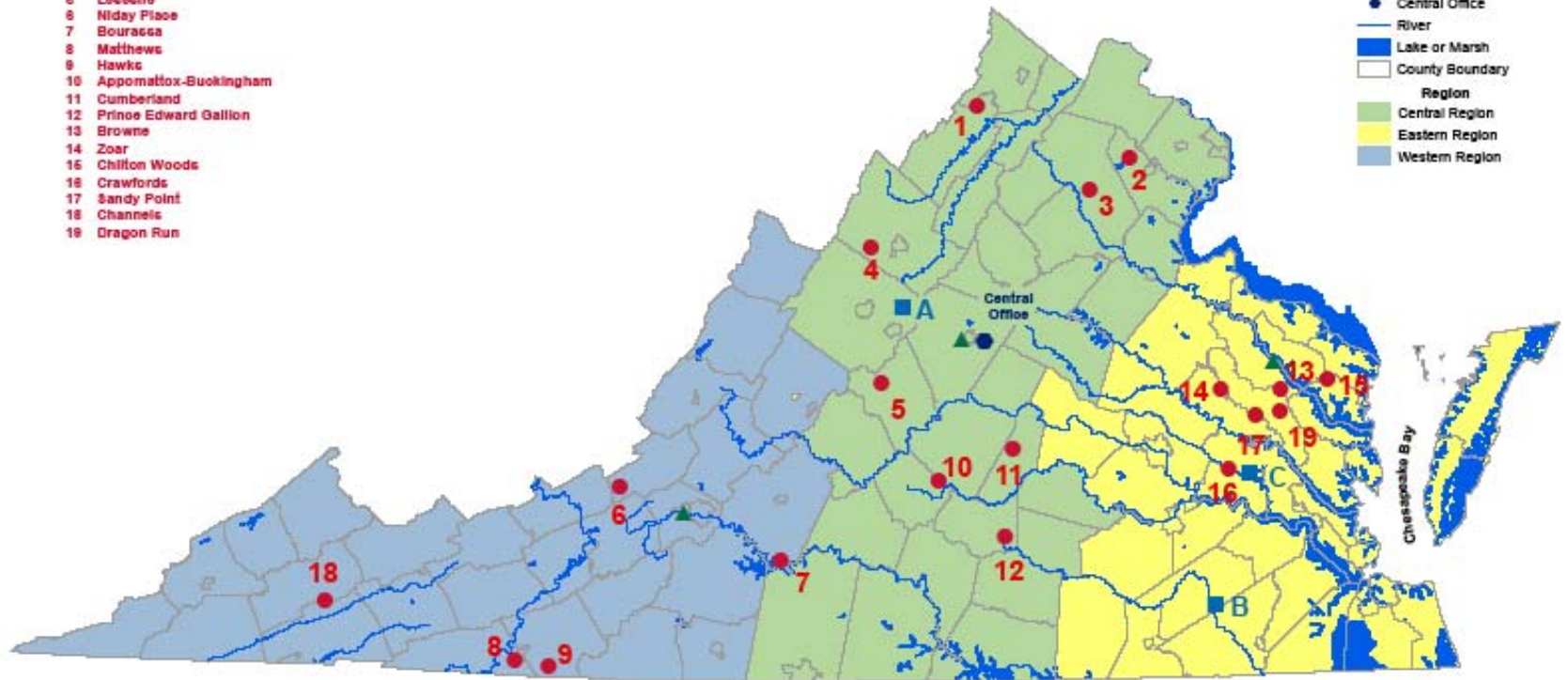
- Eastern Region- Tappahannock
- Central Region- Charlottesville
- Western Region- Salem

Forestry Centers

- A Augusta Forestry Center
- B Garland Gray Forestry Center
- C New Kent Forestry Center

Legend

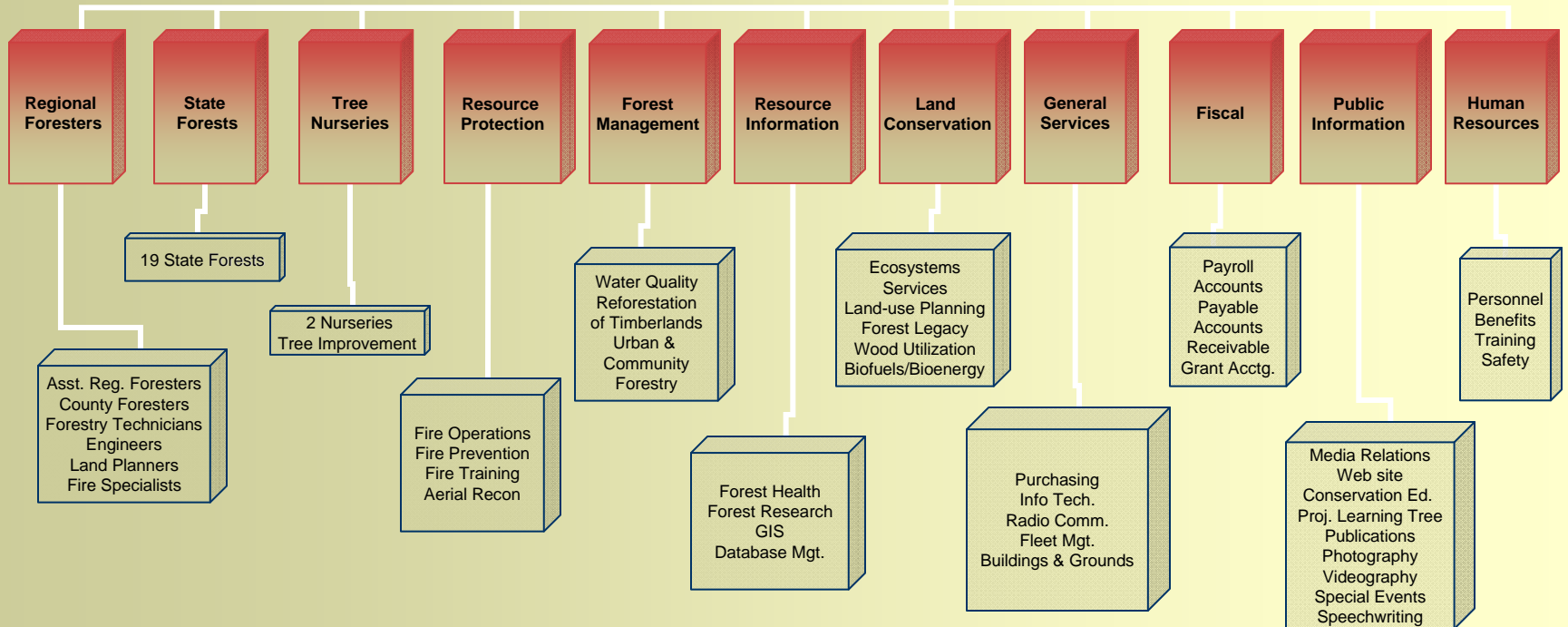
- State Forests
- ▲ Regional Offices
- Forestry Centers
- Central Office
- River
- Lake or Marsh
- County Boundary
- Region
- Central Region
- Eastern Region
- Western Region





Virginia Department of Forestry

Divisions And Responsibilities



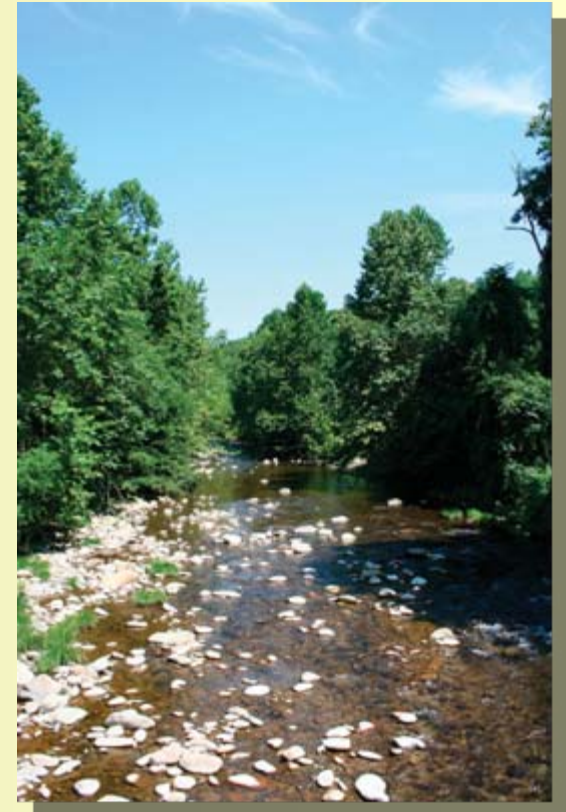
Forestry in Virginia



**15.7 Million
Acres of
Forest Land**



373,000 Forest Landowners



**\$27.5 Billion
Annual Impact**



Forestry in Virginia



**\$350 Million/Year
for Timber**



144,000 Virginians Employed



#3 Hardwood Producer in USA

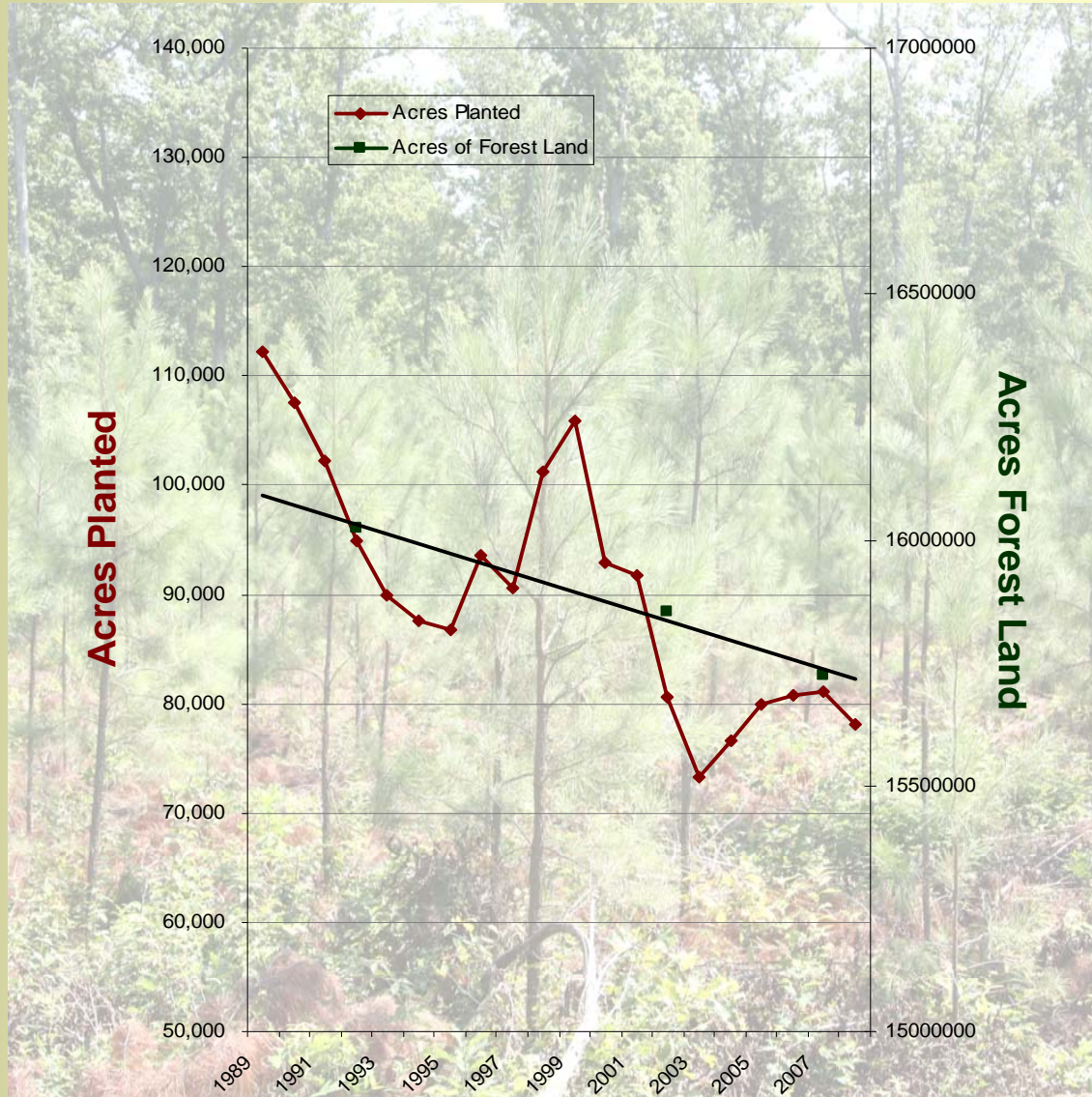


Challenges and Concerns

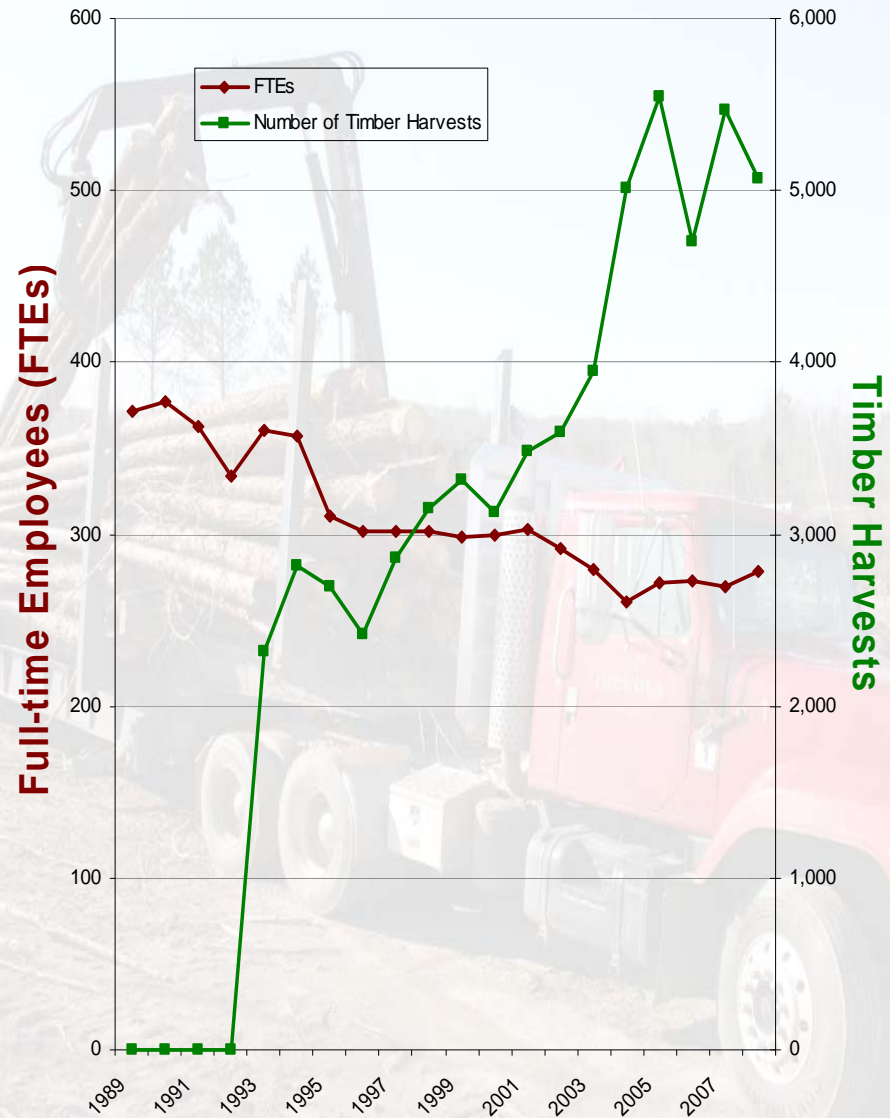
❖ Forest Land Conservation



Acres Planted vs. Acres of Forest Land



Maximum Employment Level vs. Timber Harvests



Challenges and Concerns

- ❖ **Forest Land Conservation**
- ❖ **Forest Health**



Forest Health

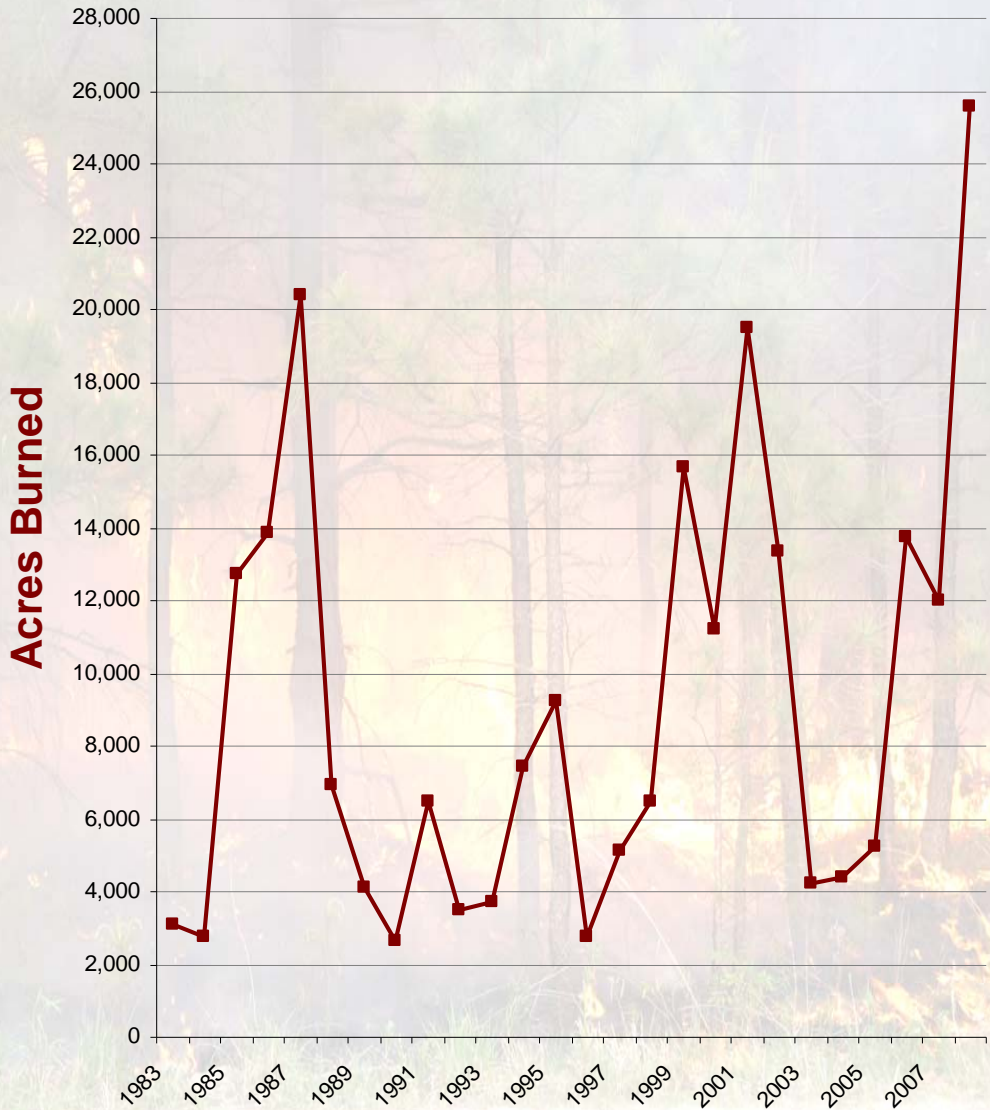


Challenges and Concerns

- ❖ **Forest Land Conservation**
- ❖ **Forest Health**
- ❖ **Wildland Fires**



Forest Acres Burned by Year

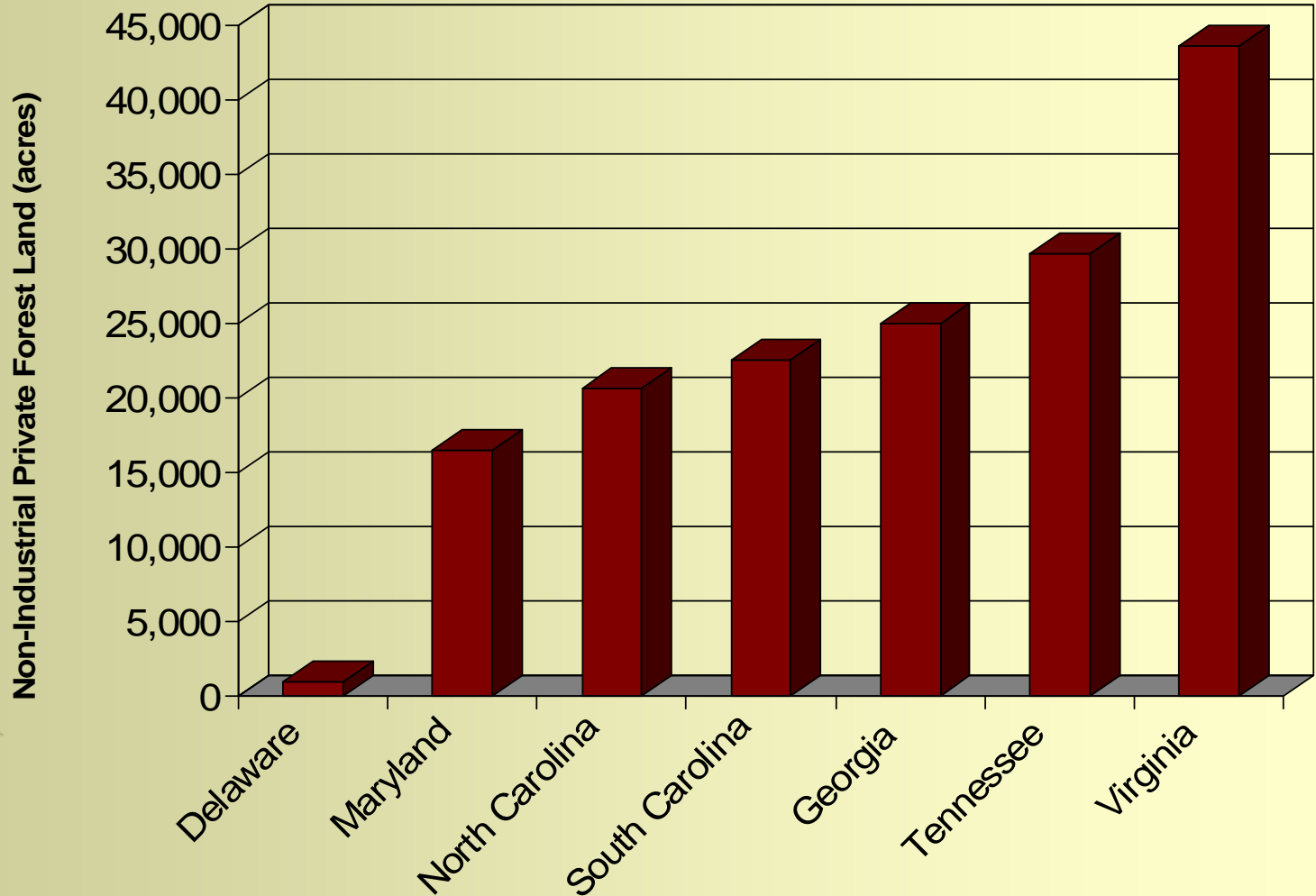


Challenges and Concerns

- ❖ **Forest Land Conservation**
- ❖ **Forest Health**
- ❖ **Wildland Fires**
- ❖ **Agency Workforce**



Acres of Private Forest Land per Full-Time Employee

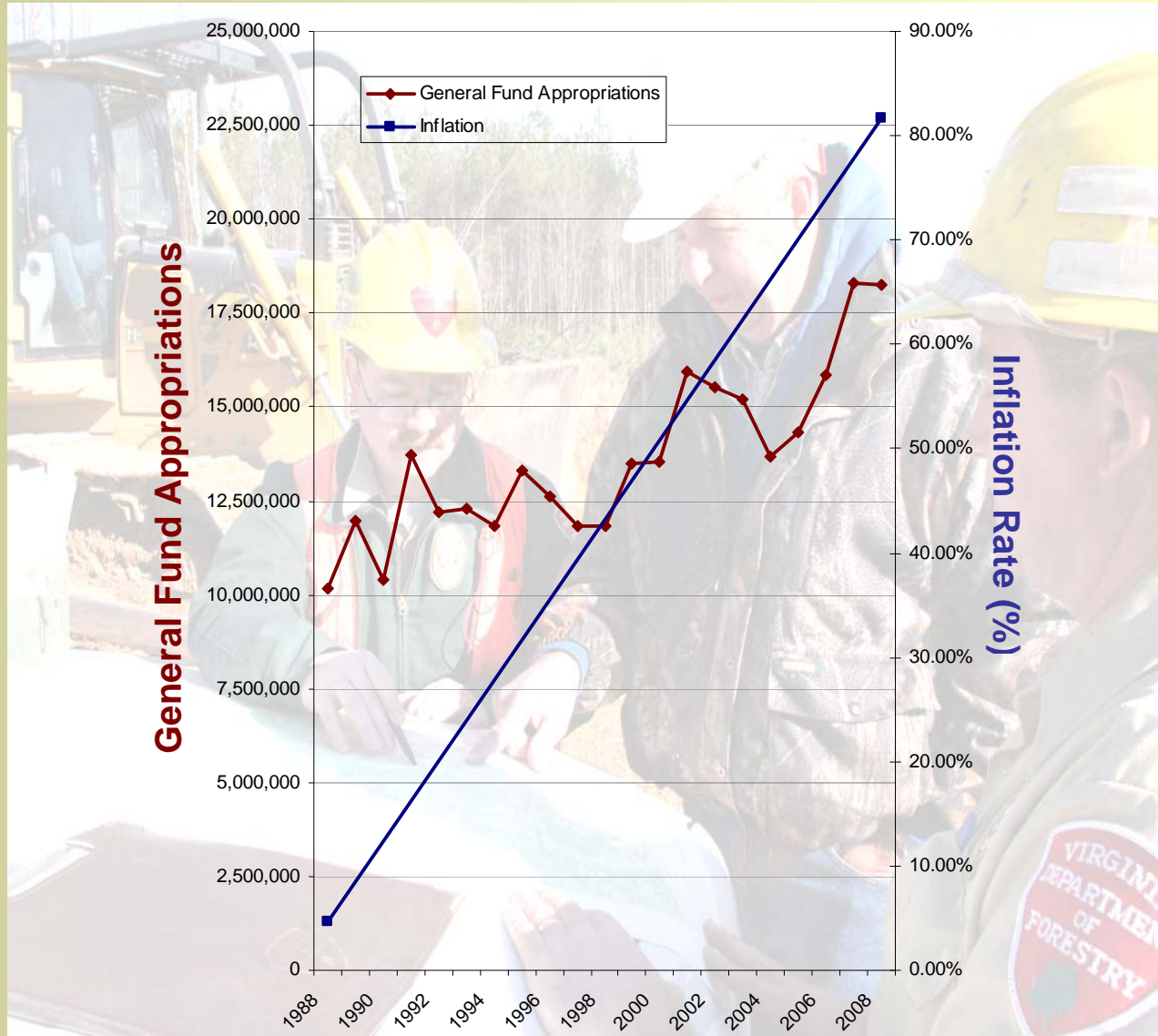


Challenges and Concerns

- ❖ **Forest Land Conservation**
- ❖ **Forest Health**
- ❖ **Wildland Fires**
- ❖ **Agency Workforce**
- ❖ **Funding**



General Fund Appropriations vs. Inflation Rate



Loss of Purchasing Power Examples

	2005	2007	Projected 2008
Information Technology	\$239,242	\$809,085	\$840,000

	2003	2005	2007
Gasoline	\$312,745	\$434,141	\$727,208
Miles Driven	3,279,742	3,220,507	3,139,083
Per Mile Gas Cost	9.5 ¢	13.48 ¢	23 ¢

	1989	2008
Firefighting Equipment	\$1,292,176	\$2,287,152

Inflationary Growth from 1989 to 2008 = 77.36 percent



**VDOF leads
the way in
efficiency and
effectiveness,**



and the agency will
continue to maintain
public safety and sustain
landowners services to the
best of our abilities.