

DCR's Conservation Lands Database and Conservation Planning

Topics to be covered:

- Land Conservation Data Collection
- Conservation Lands Website
- Land Conservation Planning



DCR mission



The Department of Conservation and Recreation works with Virginians to conserve, protect, and enhance their lands and improve the quality of the Chesapeake Bay and our rivers and streams, promotes the stewardship and enjoyment of natural, cultural and outdoor recreational resources, and insures the safety of Virginia's dams.



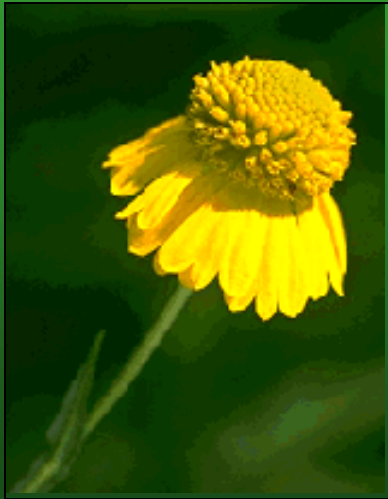
Virginia Department of Conservation and Recreation, Natural Heritage Division

- Mission: Identify, protect & conserve Virginia's biological diversity
- Focus on: Rare plants and animals and Natural communities
- Deliver conservation information to inform land conservation and land use decisions
- Manage 48 Natural Area Preserves, 41,774 acres
- 20th Anniversary 1986-2006
- Selected as the Outstanding Natural Heritage Program in the Western Hemisphere by NatureServe in 2006



Virginia's Rich Natural Diversity

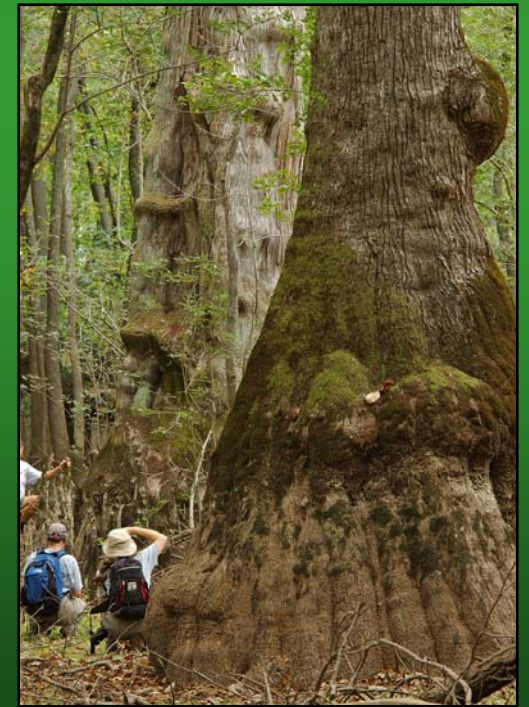
- 2,546 native plant species place Virginia 13th in the U.S.
- 737 native vertebrate species place Virginia 10th in the U.S.
- 8th in the U.S. for globally rare animals
- 14th in the U.S. for globally rare plants



Virginia Sneezeweed



Tiger Salamander



Cypress-Tupelo Swamp

Virginia Land Conservation: Setting Goals and Tracking Progress

- Initial question: what is already protected?
 - DCR had been collecting this data since 1986 as part of the Natural Heritage Database – managed areas
- Increase our effort at tracking land conservation progress.
 - Monthly collection of protected lands boundaries and protection data.
- Launched Conservation Lands Website

Tracking Land Conservation In Virginia

What Has Been Done?

- How many acres have been protected?
- Where are the protected lands?
- Why have they been protected?
- How strongly are they protected?
- How are the lands being managed?

What has already been protected?

Protected Acres Statewide

• Federal	2,412,069
• State	465,359
• VOF	337,510
• Private	113,918
• Local Government	<u>128,264</u>
Total	3,457,120

Meeting Virginia's 400,000 Acre Goal

July 1, 2005 - October 31, 2006 Protected Acres

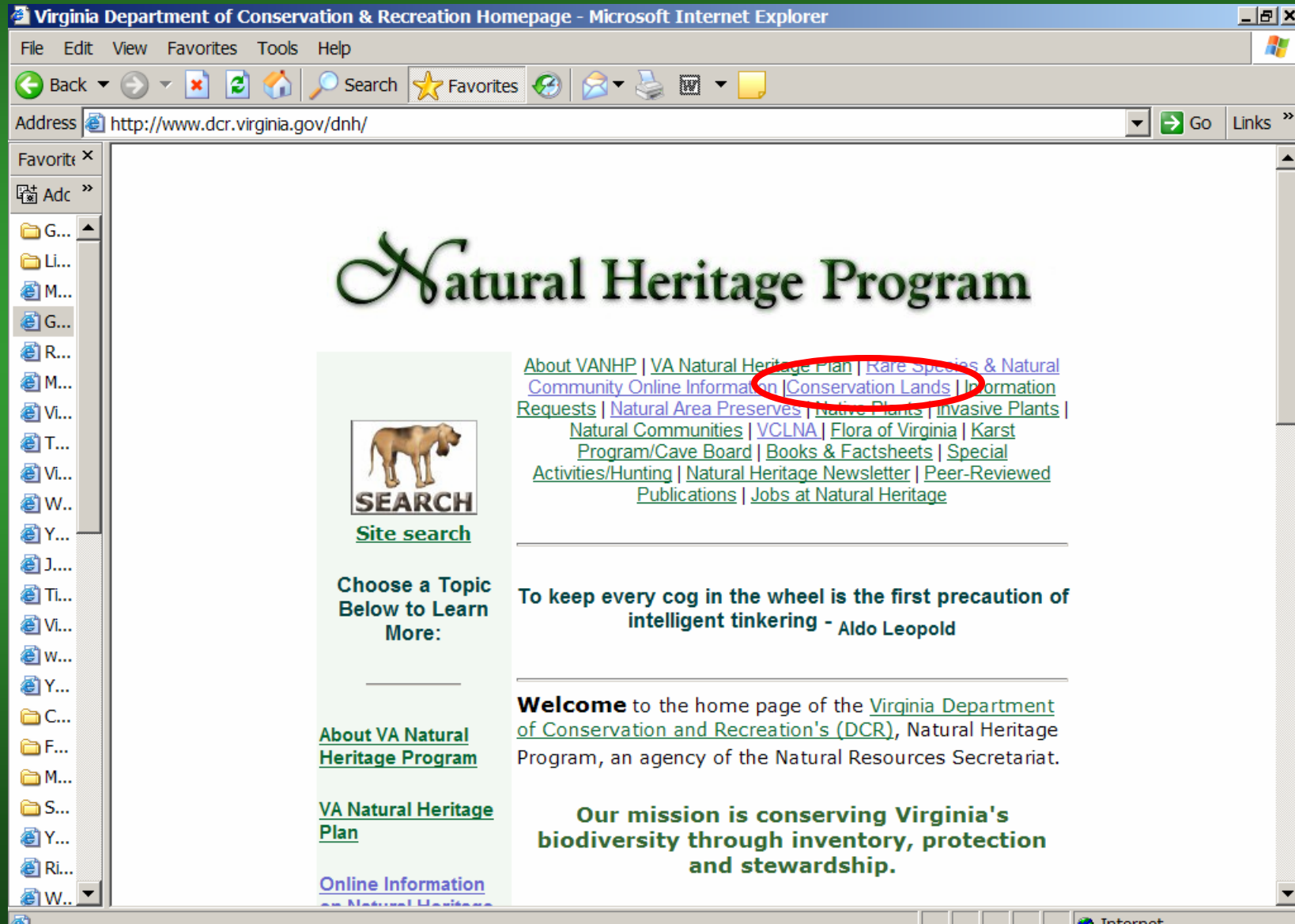
- Federal 678
- State 12,603
- VOF 48,007
- Private 15,949
- Local Government 3,610

Total 80,847

- 65,763 acres protected in fiscal year 2006
- 15,084 acres protected since July 1, 2006
- 319,153 acres more to achieve the Goal

Accessing the Conservation Lands Website

<http://www.dcr.virginia.gov/dnh/conslandindex>



Choose a topic
below to learn
more.

[Maps Online](#)

[Database
Development](#)

[Data
Usage/Download](#)

[Contributors](#)

[Statistics](#)

[Feedback](#)

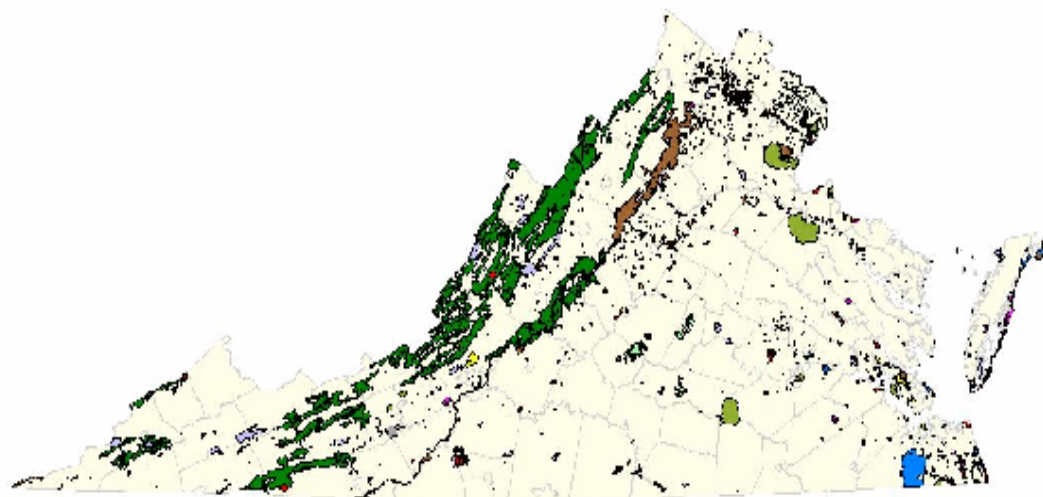
[VA Office of Land
Conservation
homepage](#)

[Natural Heritage
Program
Homepage](#)



[Site search](#)

Where are the Protected Lands?



Virginia's Conservation Lands Database

The Virginia Department of Conservation and Recreation has developed the Commonwealth's first comprehensive, continually maintained GIS data layer for Virginia's protected conservation lands. This database includes mapped boundaries and attributes for public and certain private lands in Virginia that have potential significance for serving a variety of conservation, recreation, and open-space roles. DCR's Natural Heritage Division has developed the database under a charge from the Virginia Land Conservation Foundation and the Department of Technology Planning.

Included are most federal and state lands, regional and interstate lands such as water and park authorities, parks and undeveloped or partially-developed lands owned by localities, lands owned as preserves by non-profit conservation organizations such as The Nature Conservancy, and conservation easements held by the Virginia Outdoors Foundation, land trusts, and others.

Conservation Lands Website Query

Viewer - Microsoft Internet Explorer

File Edit View Favorites Tools Help

Back Forward Stop Home Search Favorites Refresh Print Mail Stop

Address <http://192.206.31.52/cfprog/conslands/viewer.cfm> Go Links

Favorites Add..

Misc

Sta...

D

D

V.

D

D

P.

V.

V.

V.

V.

V.

C.

H.

h.

S.

T.

V.

V.

V.

V.

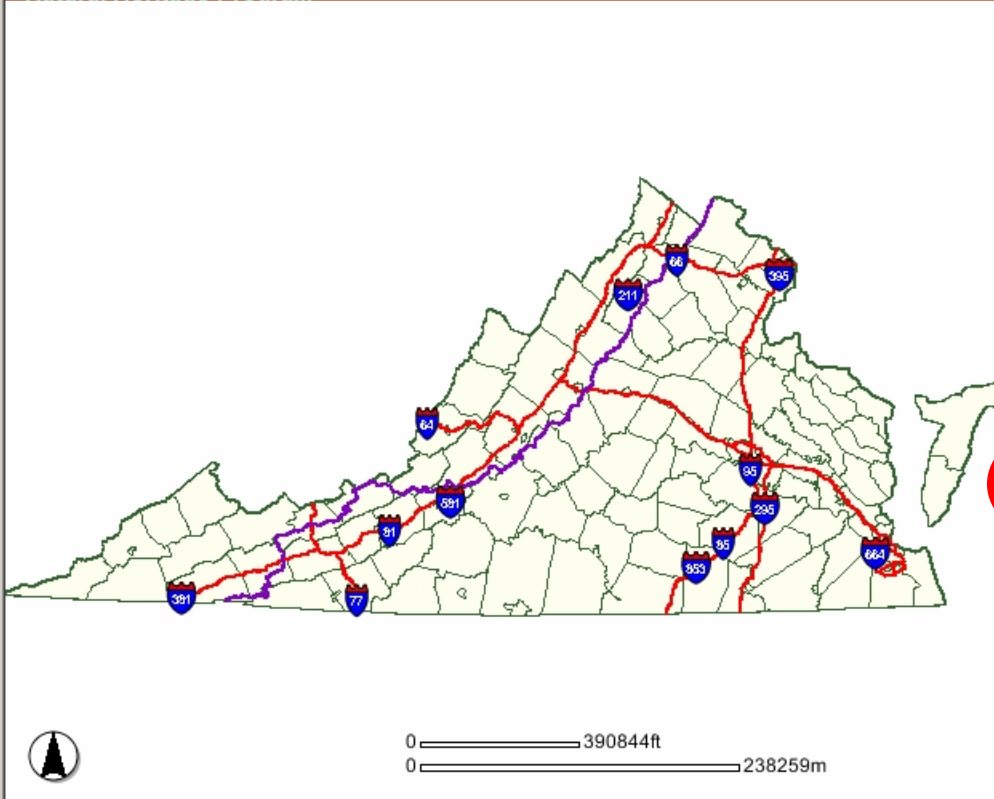
W.

Yah...

Virginia's Conservation Lands

Virginia Department of Conservation & Recreation
Natural Heritage Program

[Return to Conservation Lands Index page](#)



0 390844ft
0 238259m

DCR
Department of Conservation & Recreation
CONSERVING VIRGINIA'S NATURAL & RECREATIONAL RESOURCES

Layers

- ☒ Counties
- ☐ USGS_8_digit_Watersheds
- ☐ QUAD_Text
- ☒ Interstates
- ☒ Conservation_Lands
- ☒ Appalachian_Trail
- ☒ Scenic_Rivers
- ☒ Public_Roads
- ☒ Primary_Roads
- ☒ Place_Names

Query Help

LEGEND

Conservation Lands

- Federal
- Local
- Private
- VOE

Done

Start

Microsoft PowerPoi...

Viewer - Microsof...

Internet

10:07 AM

QUERY FOR CONSERVATION LANDS

Please Note: Some queries may take a while to return results. Please be patient and only click "Submit" once.

Query By County	
Find Conservation lands in a county	<div>Madison County</div> <div>Manassas (City)</div> <div>Manassas Park (City)</div> <div>Martinsville (City)</div>
Search for a particular conservation land	<div>Enter at least 2 letters of the name</div> <div></div>
Find Conservation lands by type	<div>Conservation Easement</div> <div>DCR Easement</div> <div>DCR Land Holding</div> <div>Educational Institution</div>
Find Conservation lands by acreage	<div>Between <div></div> and</div> <div></div> acres

Submit Reset

Query By Watershed	
Find Conservation lands by 8-digit Watershed Code	<div>02060009 - Upper Chesapeake Bay</div> <div>02060010 - Atlantic Coastal</div> <div>02070001 - South Branch Potomac River</div>
Search for a particular conservation land	<div>Enter at least 2 letters of the name</div> <div></div>

Report from Madison County Query

http://192.206.31.52 - Va Conservation Lands Query Results - Microsoft Internet Explorer

Back Search Favorites

Conservation Lands in Madison County

[Back to Search Page](#) [Close Window](#)

48 Records Found with a Total Acreage of: **215,278.66 Acres**
(see note at bottom) [Print Results](#)

ZOOM TO LAND	SOURCE LINK	TOTAL ACRES	NAME	LAND TYPE	AGENCY
1	Shenandoah National Park	196149	Shenandoah National Park	National Park	National Park Service
2	Rapidan Wildlife Management Area	10327	Rapidan	State Wildlife Management Area	VA Dept. of Game and Inland Fisheries
3	Meadows Tract	80	Meadows Tract	Non-Profit Conservation Easement	Potomac Appalachian Trail Club
4	Seven Bends State Park	981.73	Seven Bends	DCR Land Holding	VA Dept. of Conservation and Recreation
5	LTV Easement	26.82	LTV Easement	Non-Profit Conservation Easement	Land Trust of Virginia
6	VOF	142.44	MAD-VOF-768	VOF Easement	Virginia Outdoors Foundation
7	VOF	84.7	MAD-VOF-1384	VOF Easement	Virginia Outdoors Foundation
8	VOF	180.2	MAD-VOF-1059	VOF Easement	Virginia Outdoors Foundation
9	VOF	38.97	MAD-VOF-673	VOF Easement	Virginia Outdoors Foundation
10	VOF	13	MAD-VOF-672	VOF Easement	Virginia Outdoors Foundation
11	VOF	52	ORA-VOF-129	VOF Easement	Virginia Outdoors Foundation
12	VOF	175.82	ORA-VOF-191	VOF Easement	Virginia Outdoors Foundation
13	VOF	536.09	VOF Easement	VOF Easement	Virginia Outdoors Foundation
14	VOF	31.6	MAD-VOF-1385	VOF Easement	Virginia Outdoors Foundation

Done Internet

Start Microsoft PowerPo... 5 Internet Expl... 11:23 AM

Zoom In to Madison County

Viewer - Microsoft Internet Explorer

File Edit View Favorites Tools Help

Back Forward Stop Home Search Favorites

Address <http://192.206.31.52/cfprog/conslands/viewer.cfm> Go Links

Favorite: X

Adc >>

M... >

S... >

Virginia's Conservation Lands

Virginia Department of Conservation & Recreation
Natural Heritage Program

Return to Conservation Lands
Index page

DCR
Department of Conservation & Recreation
CONSERVING VIRGINIA'S NATURAL & RECREATIONAL RESOURCES

Layers

- ☒ Counties
- ☐ USGS_8_digit_Watersheds
- ☐ QUAD_Text
- ☒ Interstates
- ☒ Conservation_Lands
- ☒ Appalachian_Trail
- ☒ Scenic_Rivers
- ☒ Public_Roads
- ☒ Primary_Roads
- ☒ Place_Names

Querry Help

LEGEND
Conservation Lands

- Federal
- Local
- Private
- VOF

Map showing Madison County and surrounding areas, including Shenandoah National Park, Meadows Tract, Rapidan Wildlife Management Area, and various rivers and roads. A red circle highlights the zoom in button on the map toolbar.

Done

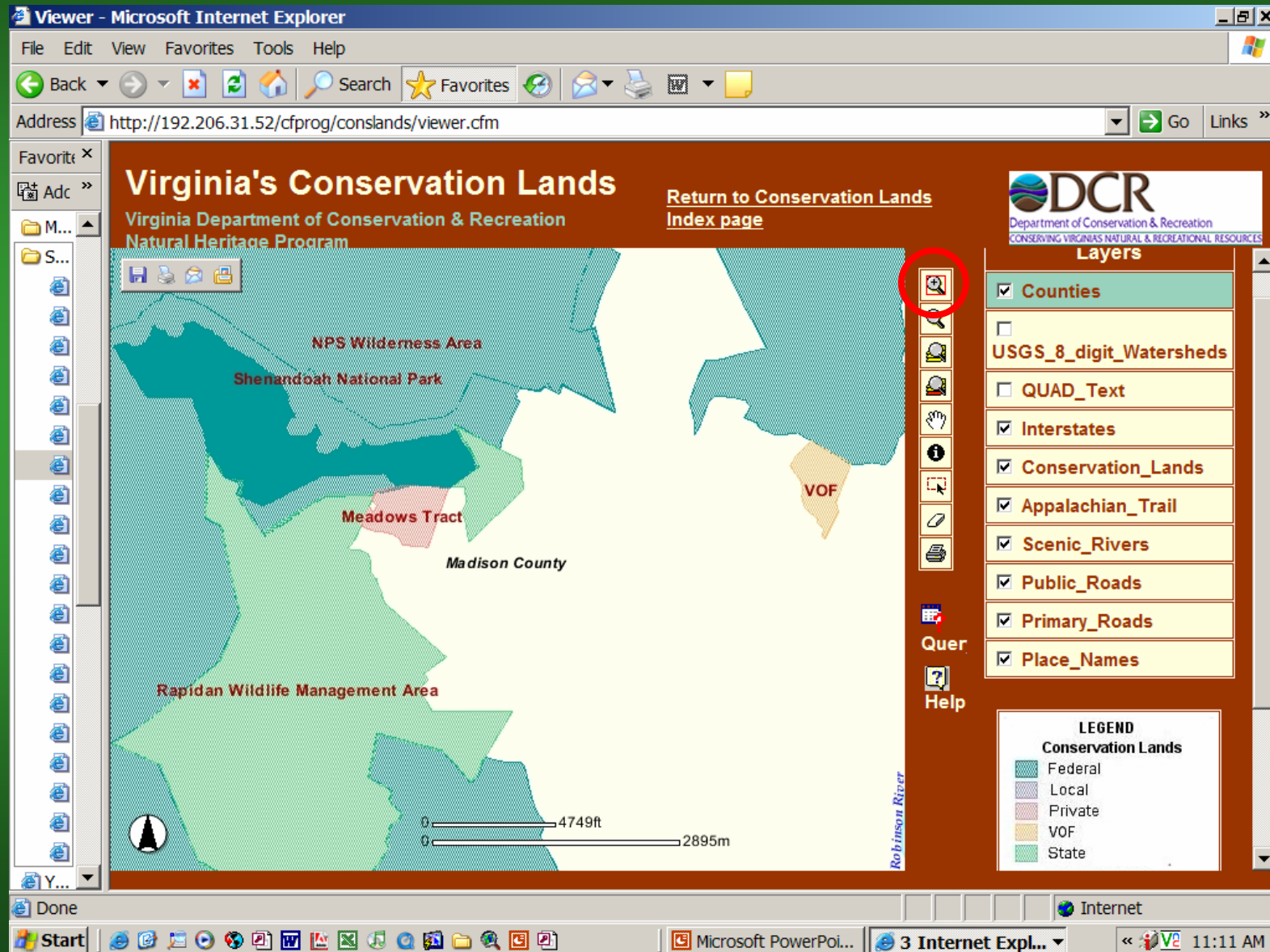
Start

Microsoft PowerPoi...

4 Internet Expl...

11:07 AM

Why Have They Been Protected?



Click Identify on Conservation Lands

Viewer - Microsoft Internet Explorer

File Edit View Favorites Tools Help

Back Forward Stop Home Search Favorites

Address <http://192.206.31.52/cfprog/conslands/viewer.cfm> Go Links

Favorite X

Adc >>

M... S...

Virginia's Conservation Lands

Virginia Department of Conservation & Recreation
Natural Heritage Program

[Return to Conservation Lands Index page](#)

DCR
Department of Conservation & Recreation
CONSERVING VIRGINIA'S NATURAL & RECREATIONAL RESOURCES

Layers

- ☒ Counties
- ☐ USGS_8_digit_Watersheds
- ☐ QUAD_Text
- ☒ Interstates
- ☒ Conservation_Lands
- ☒ Appalachian_Trail
- ☒ Scenic_Rivers

NPS Wilderness Area

Shenandoah National Park

Meadows Tract

Madison County

VOF

Identify

<http://192.206.31.52> - Identify Results - Microsoft Internet Explorer

Back Forward Stop Home Search Favorites

IDENTIFY RESULTS: Conservation_Lands

Records: 1

GISACRE	LABEL	LANDLINK	MAAGENCY	MALEVEL	MANAME	MATYPE	OWNER	PUBACCESS	TOTALACRE
124.768	Meadows Tract	http://patc.net/	Potomac Appalachian Trail Club	Private	Meadows Tract	Non-Profit Conservation Easement	Private	closed-presumed	80

Done

Internet

Start

Microsoft PowerPoi...

3 Internet Expl...

11:14 AM


Click on Link to PATC

http://192.206.31.52 - Identify Results - Microsoft Internet Explorer

IDENTIFY RESULTS: Conservation_Lands
Records: 1

GISACRE	LABEL	LANDLINK	MAAGENCY	MALEVEL	MANAME	MATYPE	OWNER	PUBACCESS	TOTALACRE
124.768	Meadows Tract	http://patc.net/	Potomac Appalachian Trail Club	Private	Meadows Tract	Non-Profit Conservation Easement	Private	closed-presumed	80

http://patc.net - Potomac Appalachian Trail Club - Microsoft Internet Explorer



the Potomac Appalachian Trail Club




STORE
(maps, books and MORE!)

MEMBERSHIPS
(join the FUN, make a difference!)

- ABOUT PATC**
(mission, staff, contacts)
- HISTORY**
(club, trail, & regional)
- CHAPTERS & SECTIONS**
(chapter pages, events, & activities)
- HIKING INFORMATION**
(gear, tips, safety, & places to go)
- RESOURCES & ARTICLES**
(news, trip reports, articles & humor)
- ACTIVITIES**
(hikes, work trips, cabin rentals, & more)
- VOLUNTEER/JOBS**
(volunteer opportunities & online reporting)
- SPONSORS/SPONSORSHIPS**
(who helps PATC, how you can help)
- SEARCH**
(can't find it? click here)

The Potomac Appalachian Trail Club (PATC) is a volunteer trails organization with a membership of over 7,000 headquartered in the Washington, DC area. The main purpose of PATC is the upkeep and improvement of nearly 1,000 miles of hiking trails, 34 shelters, and 32 cabins in Virginia, Maryland, West Virginia, Pennsylvania, and the District of Columbia.

Want to contact us? [Click here for contact info and hours.](#)



@HOT ITEMS!

- New! - [A.T. Parking and Shuttles](#)
- [Rental Cabins Availability](#)
- [The Great Eastern Trail](#)

Done

Start | Internet Explorer | Microsoft PowerPoint | 3 Internet Expl... | 11:16 AM

How are the Lands Being Managed?

Categories for Biodiversity Management

- 1: *Specifically Designated for the Protection of Plant and Animal Communities.*** Examples include Wilderness Areas, National Forest Special Biological Areas, Research Natural Areas and Roadless Areas, Nature Conservancy Preserves, State Natural Area Preserves, and National and State Parks with a nature focus.
- 2: *Designated for the Conservation of Plant and Animal Communities with Limited Impacts Permitted.*** Examples include many National Fish and Wildlife Refuges, most State Parks, State Wildlife Management Areas, Virginia Outdoors Foundation properties, and natural Stream Valley Parks. The managed area includes an area less than 10% in man-made vegetation and improvements.
- 3: *Designated for Natural Resource Conservation and Recreation Use.*** Examples include most National Forest matrix lands which are used to generate timber, some State Parks with a cultural resource focus such as Staunton River, Sailor's Creek Battlefield, and New River Trail Parks, private timber lands which are not converted from natural forests when logged and that have a chance to become natural forests before they are logged again, private lands under open space easement that may include a Virginia Department of Forestry timber management plan.
- 4: *No Designation or Management for Conservation of Natural Conditions.*** Examples include State or National Parks and Monuments in urban settings, many County, City, and Regional Parks, sportsman club properties, private agricultural lands and lands used for commodity timberland production using non-native species or monocultures, residential lands, and urban lands.
- 5: *Unknown Management Intent.*** Managed Areas for which management intent is currently unknown. These lands need to be investigated further before a management status rank is assigned.

Land Conservation Reporting

Every month DCR will report:

- Total number of new acres permanently protected via fee simple acquisition.
- Total number of new acres permanently protected via easement.
- The information will be reported in four categories, federal, state, local, and private by DCR on the 15th of the month, every month.

Every six-months DCR will collect data on 12 specific attributes for each parcel protected during that six month cycle and will produce reports on February 15 for July – December and August 15 for the first six months of the year.

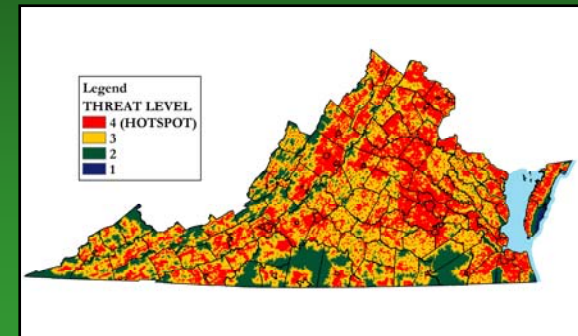
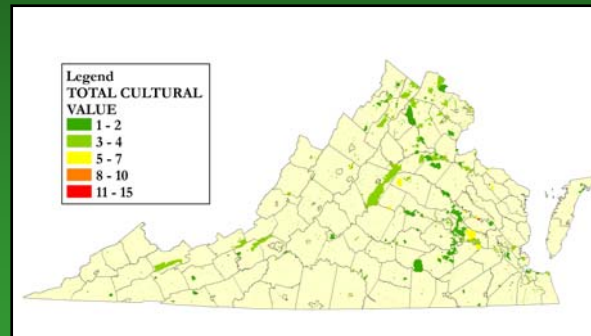
- Considerable private and public efforts have been made towards conservation of Virginia lands.
- The Conservation Lands database can tell us what has been done so that we can answer the question of what needs to be done next.

STRATEGIC LAND CONSERVATION QUESTIONS INCLUDE:

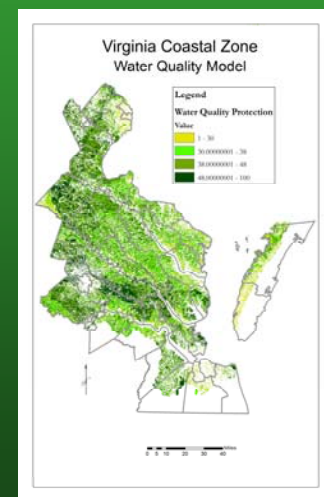
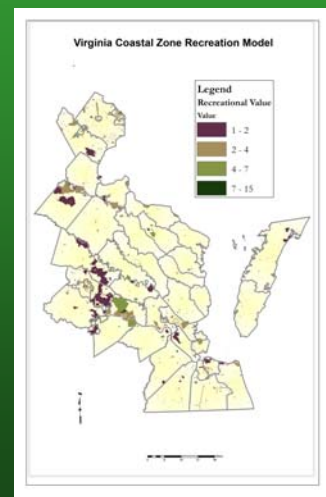
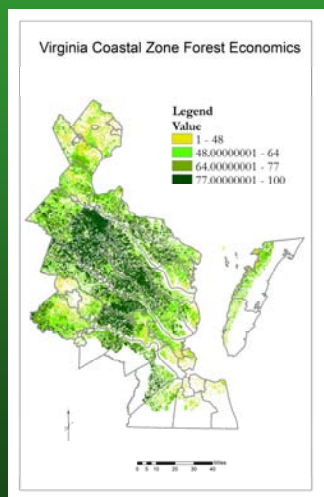
- What is our vision for the resources that need protection?
- How can we determine if we are doing a good job?
- How many resources have been captured by these lands?
- What is the goal for how many more need to be protected and over what time frame?

Virginia Land Conservation Needs Assessment

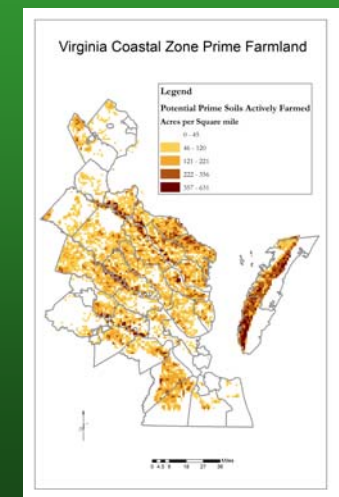
Ecological Cultural Assets Vulnerability



Forest Economics



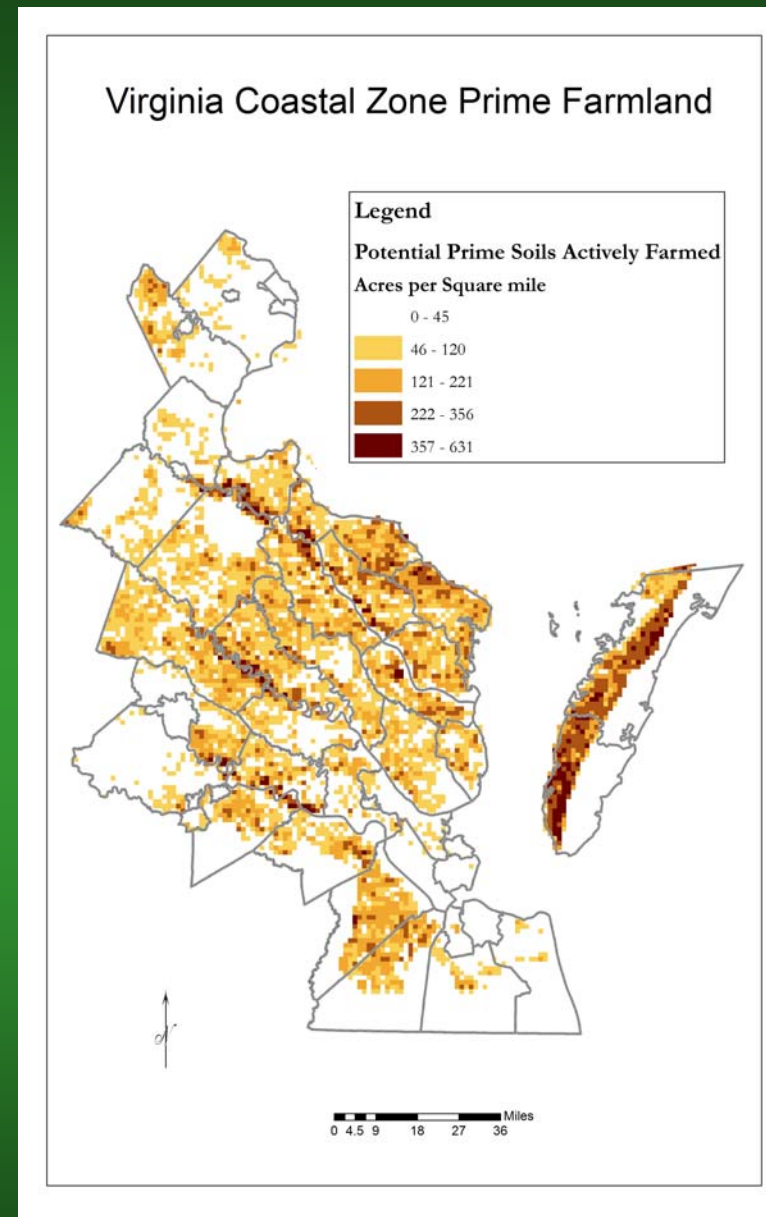
Prime Farmland



Prime Farmland Model

Virginia Data Layers

- USDA Natural Resources Conservation Services Soil Survey data
- Land Cover data
- National Elevation Dataset (Slope)



Questions?

