

Virginia's Conservation Finance Work Group

Presented by
Bill Lee, Trust for Public Land, Andy
Tuck, The Nature Conservancy &
Virginia Conservation Finance Initiative

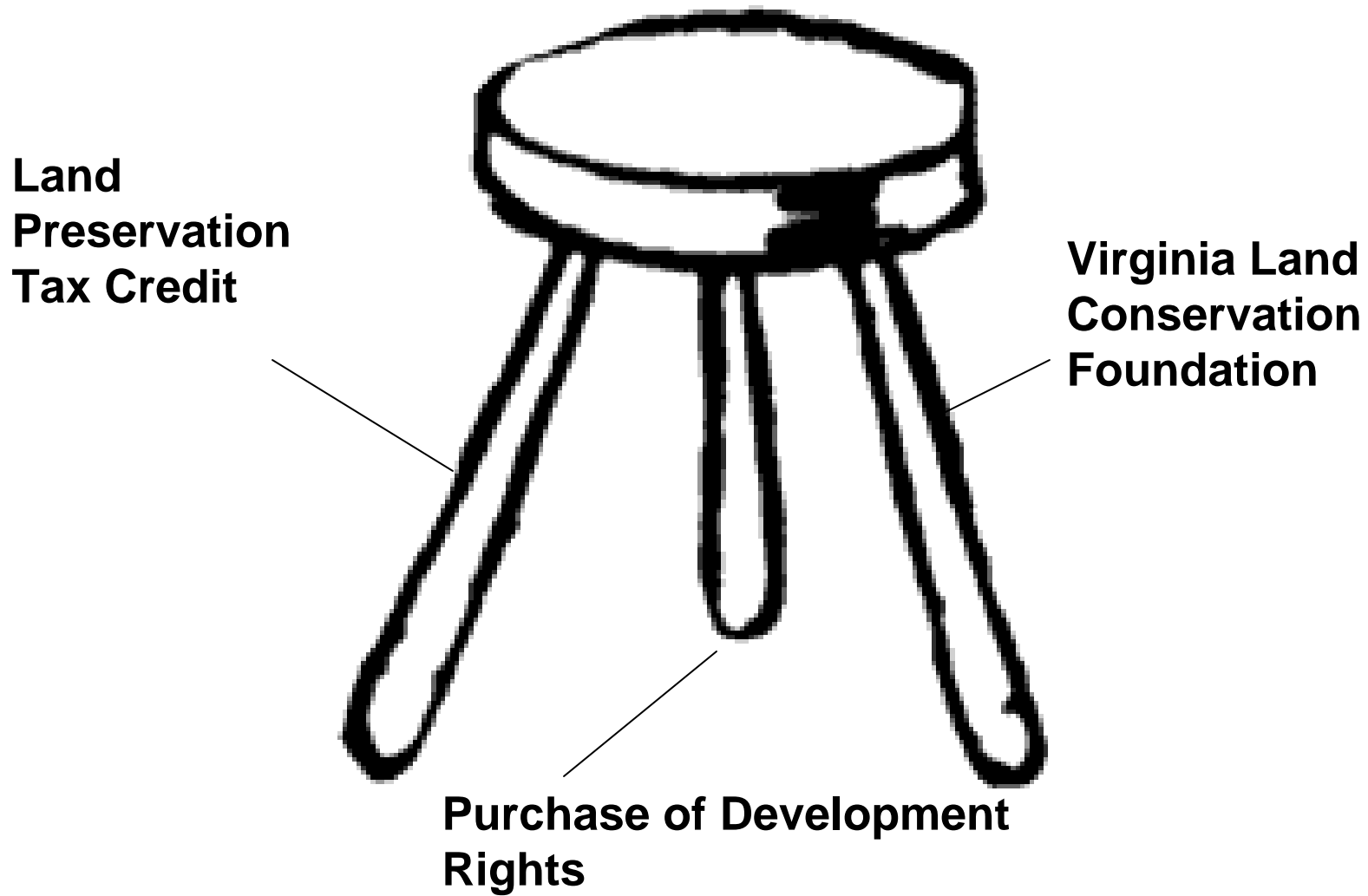
Doris Duke Project

- Statewide Land Conservation Needs Assessment
- Feasibility Study
- Test Voter Support

Working Group Member Organizations

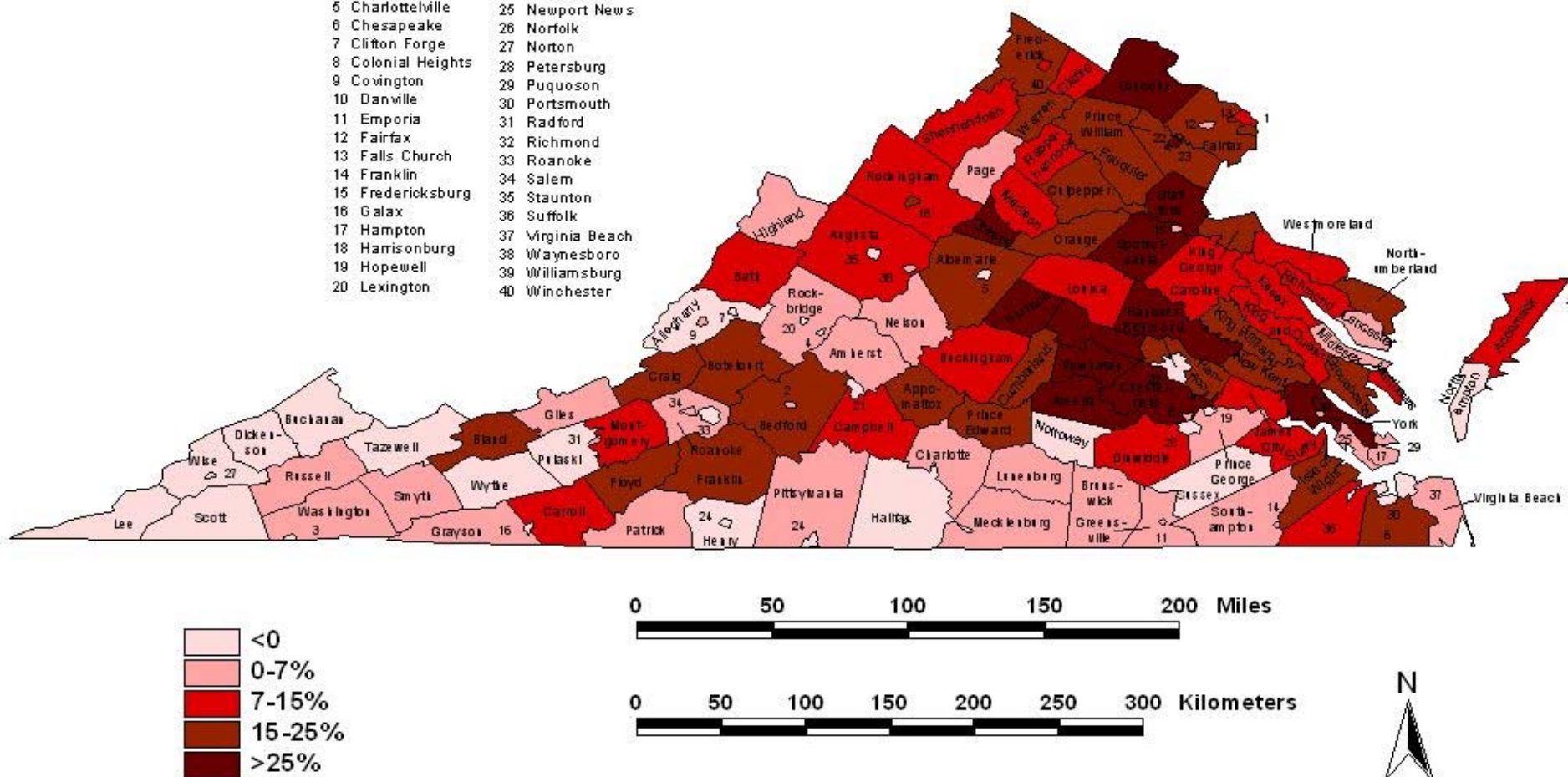
- The Nature Conservancy
- Trust for Public Land
- New River Land Trust
- National Wild Turkey Federation
- Virginia Farm Bureau
- VACO
- VML
- Virginia Conservation Network
- *Virginiaforever*

Land Conservation's Three Legged Stool



INDEPENDENT CITIES

- | | |
|--------------------|-------------------|
| 1 Alexandria | 21 Lynchburg |
| 2 Bedford | 22 Manassas |
| 3 Bristol | 23 Manassas Park |
| 4 Buena Vista | 24 Martinsville |
| 5 Charlottesville | 25 Newport News |
| 6 Chesapeake | 26 Norfolk |
| 7 Clifton Forge | 27 Norton |
| 8 Colonial Heights | 28 Petersburg |
| 9 Covington | 29 Puquoson |
| 10 Danville | 30 Portsmouth |
| 11 Emporia | 31 Radford |
| 12 Fairfax | 32 Richmond |
| 13 Falls Church | 33 Roanoke |
| 14 Franklin | 34 Salem |
| 15 Fredericksburg | 35 Staunton |
| 16 Galax | 36 Suffolk |
| 17 Hampton | 37 Virginia Beach |
| 18 Harrisonburg | 38 Waynesboro |
| 19 Hopewell | 39 Williamsburg |
| 20 Lexington | 40 Winchester |



Projected Change in Population Density of Virginia Localities (population/square mile) 2005-2020

Source: 2005 data - Weldon Cooper Center for Public Service, University of Virginia. 2020 projections - Virginia Employment Commission

4 081 70

1 12 000

5 131 365 074



FS000 17 650 F/S.6 FF2.0 EC 0 SP-0/H.05034 60% dt011.2 d5012 24.1V -60MB ER00 CHMS046

3-1-00

1:12000

PAGE 23

2000-309-159

L134

63731 8803 JAN
F-0001751.GTM



2 17 170

1+12 000

5 134 353 200



15 Agt
1111
152.5

3-1-00

1:12000

PDC 23

2000-305-191



FS300 1/ 500 F/5.6 FF2.0 EC 0 * SP- v/h.04891 60% dt012.1 ds015 25.4V -60mb ER00 CAM5046

4287

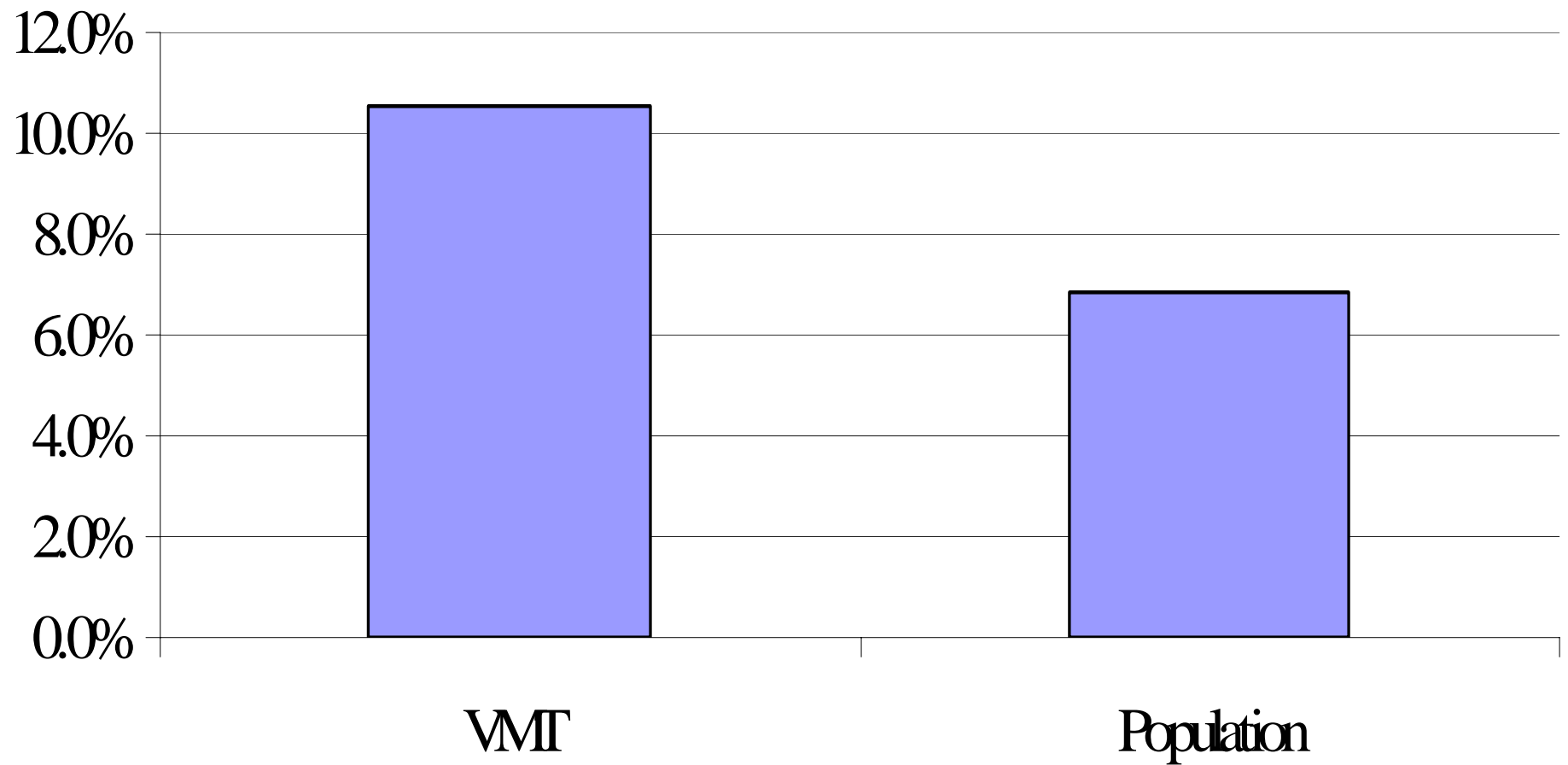
WILD 15/4/D8A-F
Nr:13086 15293

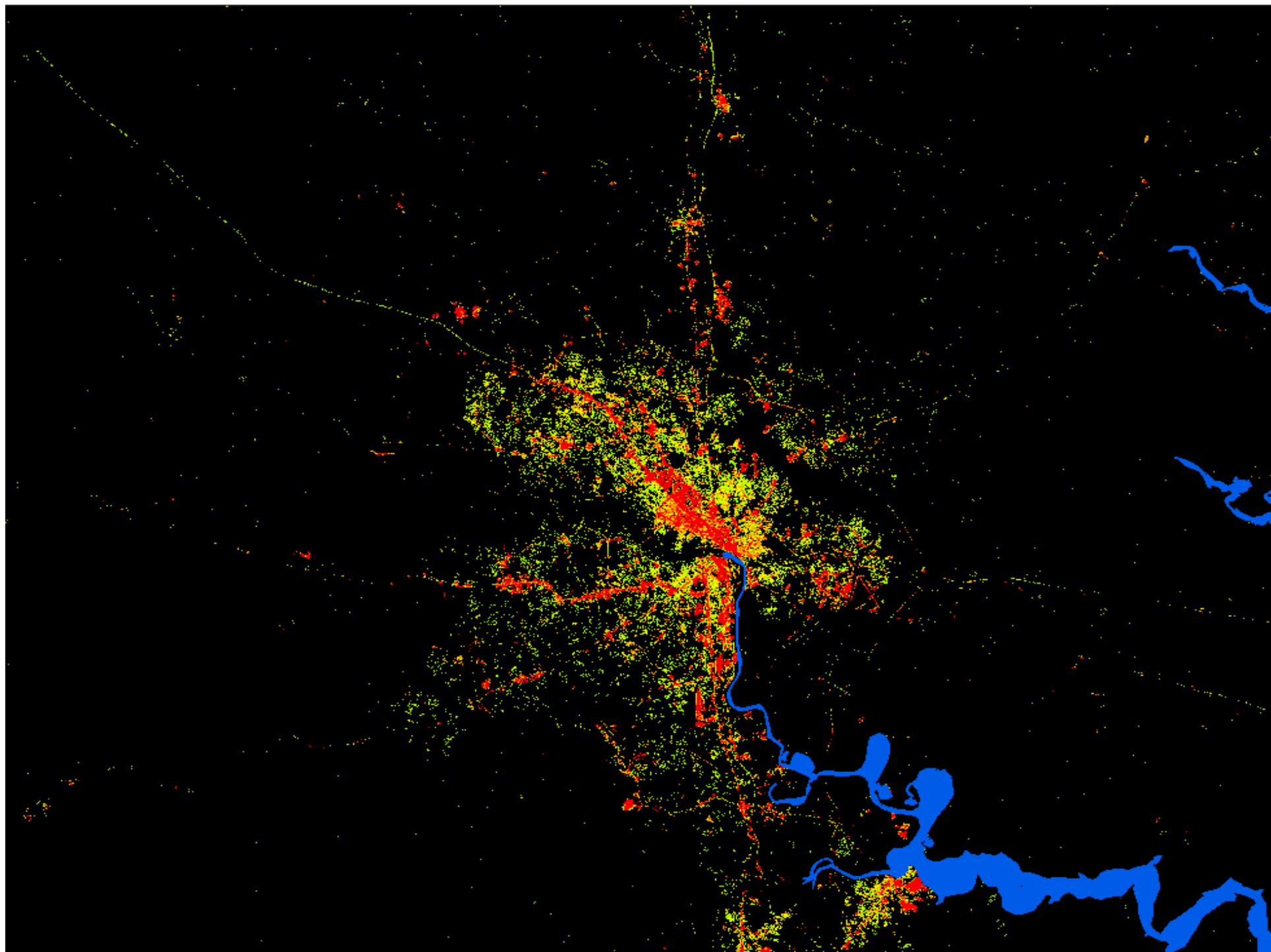


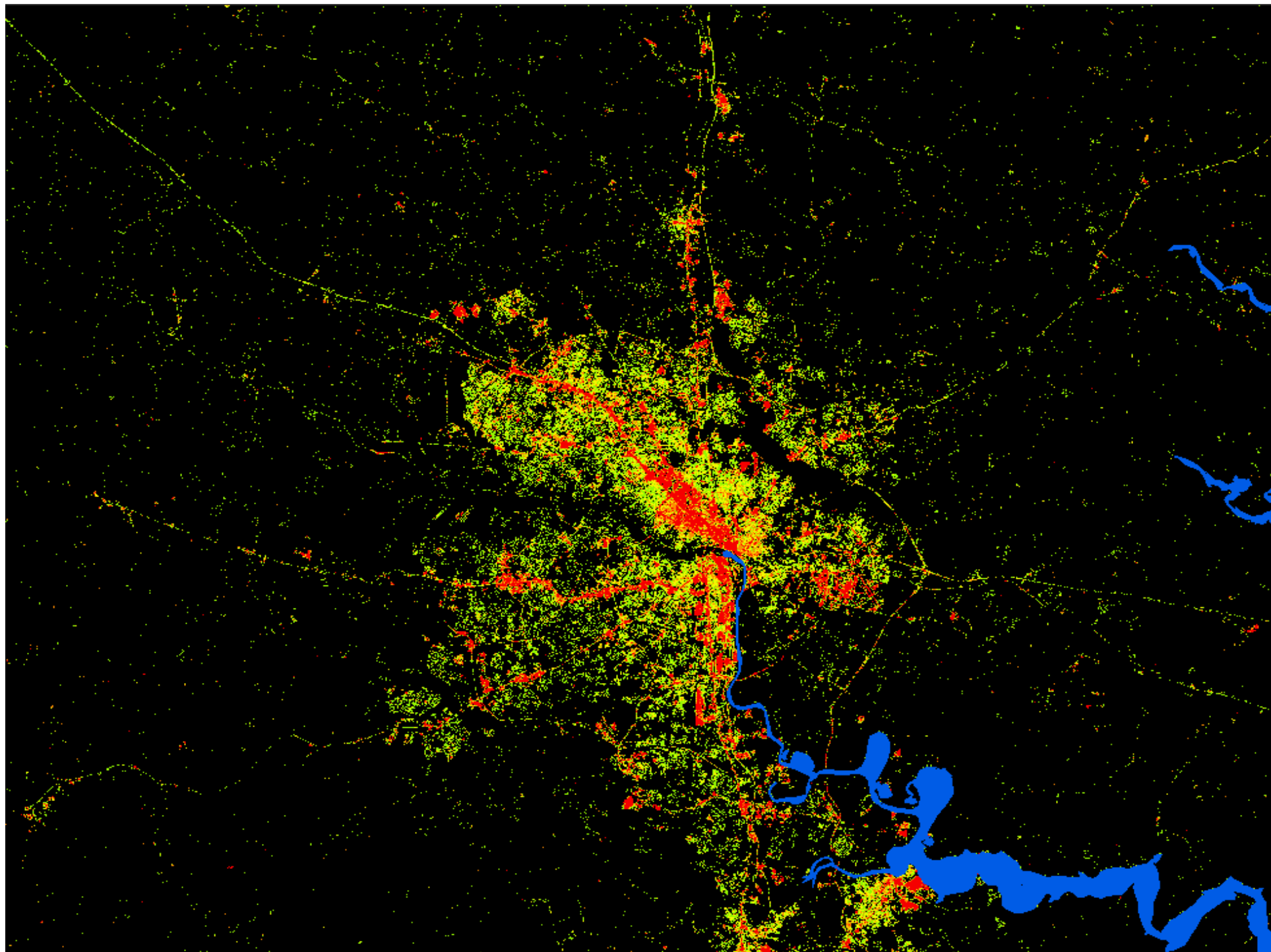


2000-05 Growth in Virginia

Vehicle Miles Traveled Versus Population







	Average Cost per acre	% Increase
1992 Natural Areas	\$956	
2002 Natural Areas	\$1,374	43.7%
1992 State Parks	\$3,172	
2002 State Parks	\$5,576	75.8%
1992 Bond Issue Purchase	\$1,904	
2002 Bond Issue Purchase	\$3,718	95.3%

Feasibility Research

- Trust for Public Land reviews all financing mechanisms available to Legislature:
 - Financial feasibility?
 - Political feasibility?
 - Public favorability?

State Comparison

Chart 1: State Land Conservation Spending (1998-2005)

State Name	Total State Spending	Annual Average	2005 Population	Annual Spending per Capita
Delaware	\$204,374,534	\$25,546,817	843,524	\$30.29
North Carolina	\$851,733,148	\$106,466,644	8,683,242	\$12.26
New Jersey	\$738,662,107	\$92,332,763	8,717,925	\$10.59
Maryland	\$413,048,657	\$51,631,082	5,600,388	\$9.22
Pennsylvania	\$454,806,481	\$56,850,810	12,429,616	\$4.57
Virginia	\$55,267,725	\$6,908,466	7,567,465	\$0.91
West Virginia	\$8,378,518	\$1,047,315	1,816,856	\$0.58

State Conservation Financing

- **Maryland:** Program Open Space -- \$258M in 2006 from dedication of 0.25% of Real Estate Transfer Tax.
- **North Carolina:** \$128M from Conservation Trust Funds in FY2007.
- **Pennsylvania:** \$80M from Tipping Fee dedicated to land and water conservation.
- **Missouri:** Dedication of 1/8 of 1% of sales tax to land conservation yields \$96M for land conservation.

Polling Methodology

- **Bi-partisan polling team of Fairbank, Maslin, Maullin & Associates (D) and Public Opinion Strategies (R)**
- **Telephone interviews with 600 registered Virginia voters who are likely to cast ballots in the November 2008 general election**
- **Margin of sampling error of +/- 4%**
- **First poll conducted September 29 – October 2, 2007**

Polling Methodology

- **Bi-partisan polling team of Fairbank, Maslin, Maullin & Associates (D) and Public Opinion Strategies (R)**
- **Telephone interviews with 600 registered Virginia voters who are likely to cast ballots in the November 2008 general election**
- **Margin of sampling error of +/- 4%**
- **First poll conducted September 29 – October 2, 2007**

Agreement with Statements About Conservation in Virginia

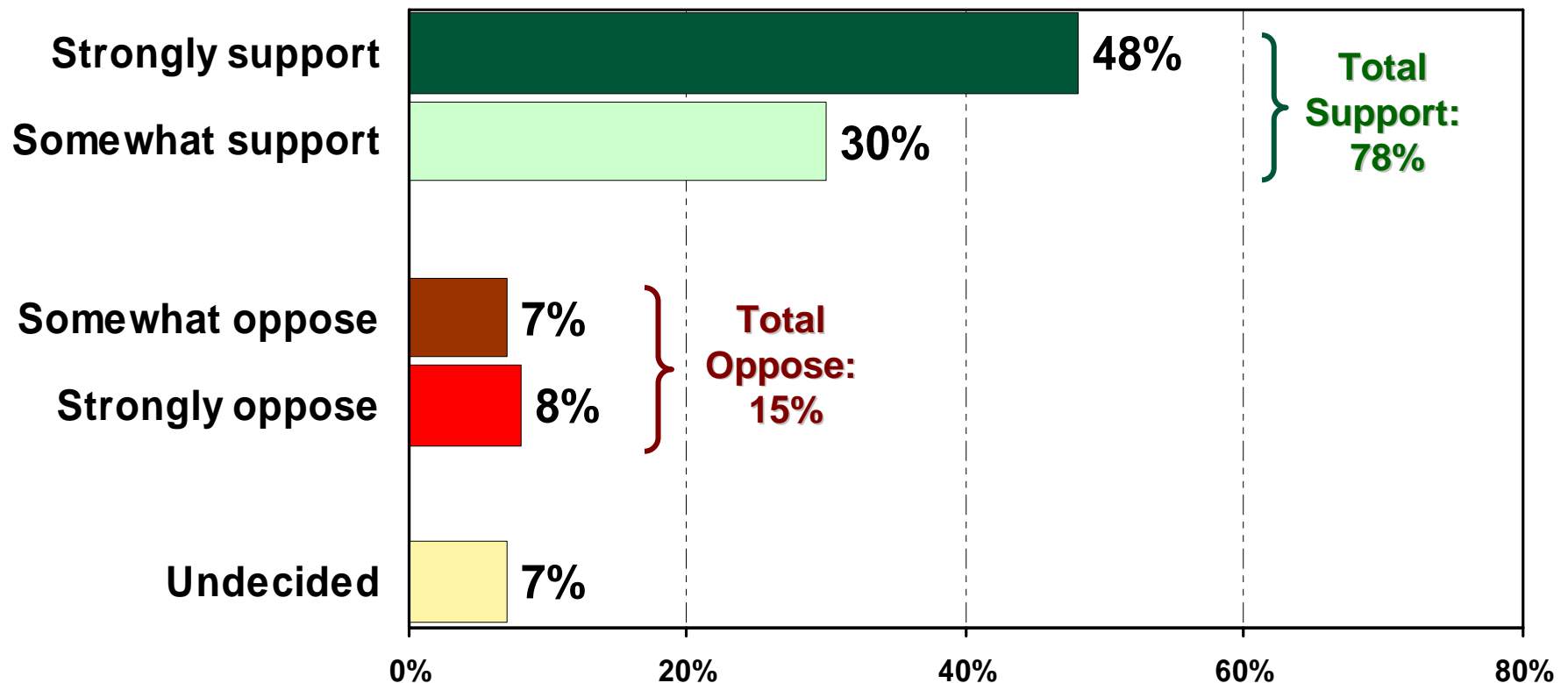
Statement	Total Agree
Virginia's natural lands, rivers, lakes, and streams are essential to our <u>quality of life</u> .	94%
Virginia's natural lands, rivers, lakes, and streams are a part of our <u>heritage</u> that must be preserved for future generations.	94%
Protecting natural lands and forests in Virginia will help to keep the state's <u>water</u> clean.	90%
Having clean air and water, and undeveloped lands are critical to keeping Virginia's <u>economy</u> strong.	86%
Government should purchase <u>more land</u> in Virginia for conservation.	70%

Agreement with Statements About Conservation in Virginia

Statement	Total Agree	Total Disagree
There are too many laws and regulations in place to protect Virginia's environment.	34%	54%
Virginia has more than enough natural lands and parks, and we do not need to do any more to protect them.	33%	61%

Support for Dedicating Public Funding to Conservation

Question: “Would you generally support or oppose the idea of dedicating additional public funding to programs to protect Virginia’s land, water, and wildlife?”



Thank You

- The Nature Conservancy
- Trust for Public Land
- New River Land Trust
- National Wild Turkey Federation
- Virginia Farm Bureau
- VACO
- VML
- Virginia Conservation Network
- *Virginiaforever*