

# Conduent Overview

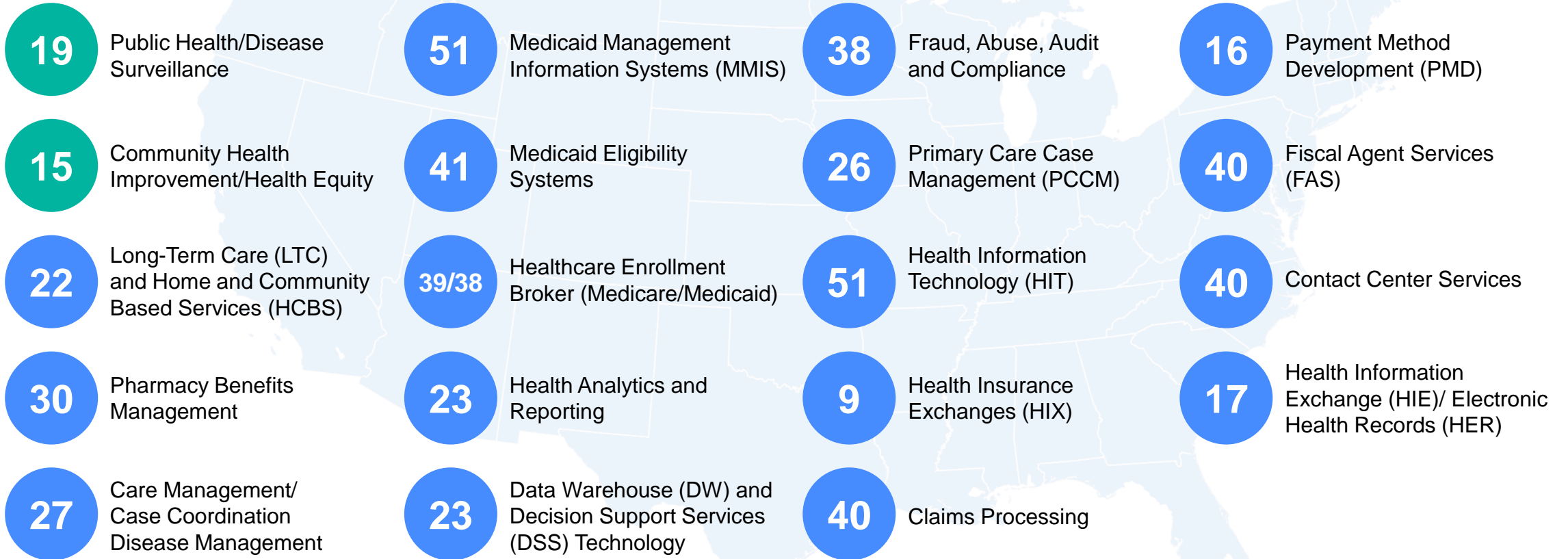
Health Equity and Disease Tracking Solutions

# Agenda

- Introductions
- Overview of Conduent
- How Conduent supports Health Equity
- Next Steps

# Conduent's Breadth of Experience

## 51 Years Government Healthcare Experience Nationwide



# Conduent in Virginia

## Health Equity and Disease Tracking Solutions

### Maven

Public Health/Disease surveillance, tracking, and reporting

- Statewide infectious disease surveillance

### HCI Platform

online hub for community health improvement and collaboration

- Arlington County
- Fairfax County
- Loudoun County
- Fredericksburg area health system
- Greater Hampton Roads

# Anticipated Outcomes

Clear and actionable **insights**  
to advance health equity

Deepened community  
**partnerships** to sustain action

Improved community  
health **outcomes**

Multi-sector strategy  
**alignment**

# Our Approach to Health Equity

Examine disparities:  
break out data by  
gender, race/ ethnicity,  
neighborhood

Analyze social  
determinants of health  
and the root causes of  
health inequities

Foster community  
engagement and  
multi-sector  
collaboration

Integrate health,  
social, and economic  
data for a  
comprehensive  
understanding of  
barriers and needs

# HCI Platform



- 200+ health, social, and economic indicators
- Dashboards for quick comparisons
- Interactive downloadable charts, maps, storytelling tools
- Ability to add local data and resources

# Health and Quality of Life Data

## Health Behaviors, Outcomes, and Access

**Chronic Diseases**  
**Cancer**  
**Maternal and Infant Health**  
**Mental Health and Substance Abuse**  
**Health Behaviors**  
**Health Insurance and Access**



## Social Determinants of Health

**Education**  
**Economy**  
**Housing**  
**Transportation**  
**Income**  
**Public Safety**  
**Environment**



# HCI National Data Sources

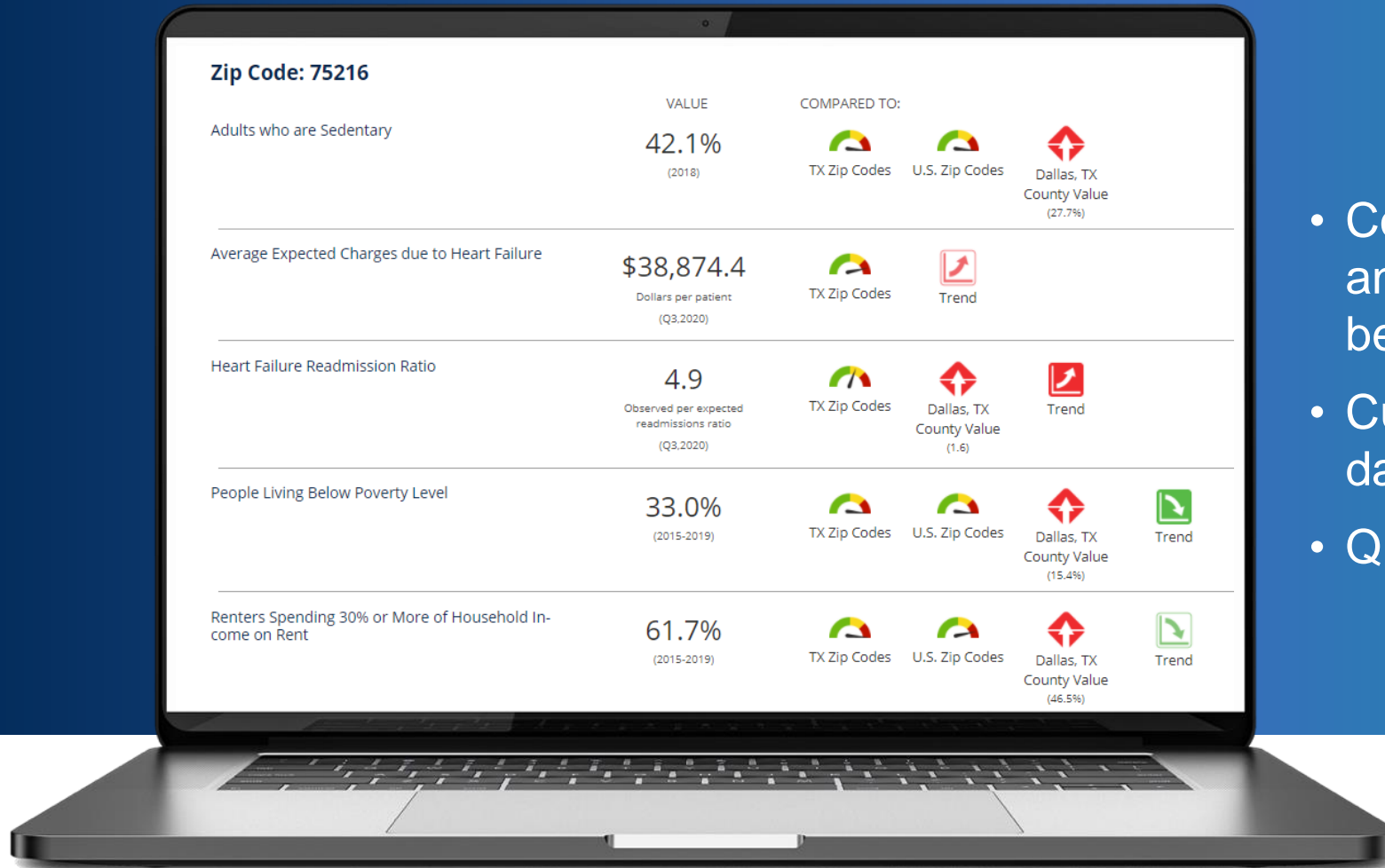
200+ core indicators and 250 demographic data elements

- American Community Survey
- Annie E. Casey Foundation
- Brookings Institute
- Centers for Medicare & Medicaid Services
- County Health Rankings
- Centers for Disease Control and Prevention
- Claritas Consumer Buying Power
- Feeding America
- National Cancer Institute
- National Center for Education Statistics
- National Environmental Public Health Tracking Network
- The Dartmouth Atlas of Health Care
- U.S. Bureau of Labor Statistics
- U.S. Census - County Business Patterns
- U.S. Census - Small Area Health Insurance Estimates
- U.S. Chamber of Commerce Institute of Legal Reform
- U.S. Department of Agriculture - Food Environment Atlas
- U.S. Environmental Protection Agency
- U.S. Small-Area Life Expectancy Estimates Project (USALEEP)
- United Way ALICE Project

# HCI Data Sources for Virginia

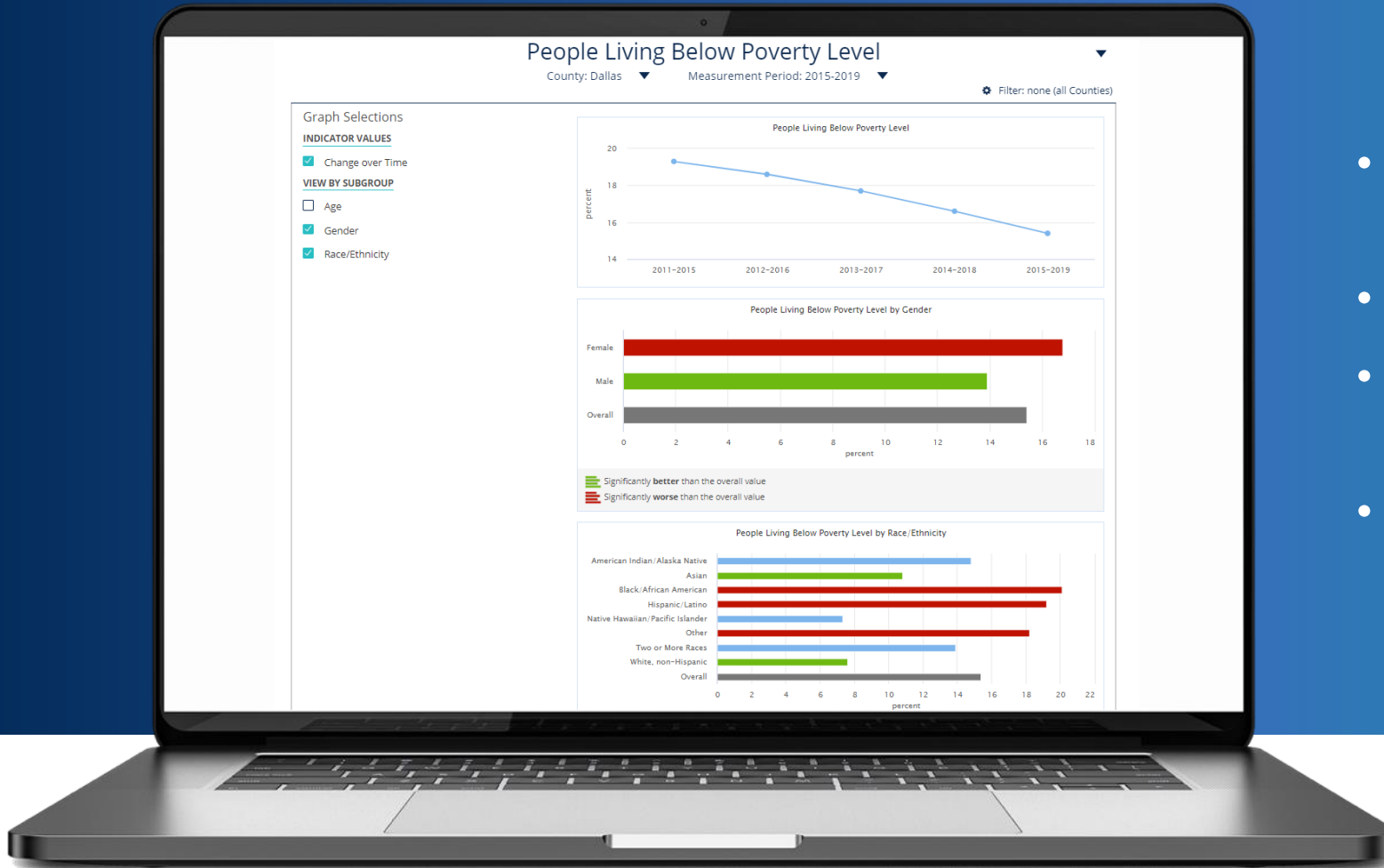
- Virginia Atlas of Community Health
- Virginia Behavioral Risk Factor Surveillance System
- Virginia Department of Education
- Virginia Department of Health
- Virginia Health Information (VHI)
- Virginia Labor Market Information
- Virginia State Board of Elections
- Virginia Youth Survey

# Dashboards for Quick Comparisons and Insights



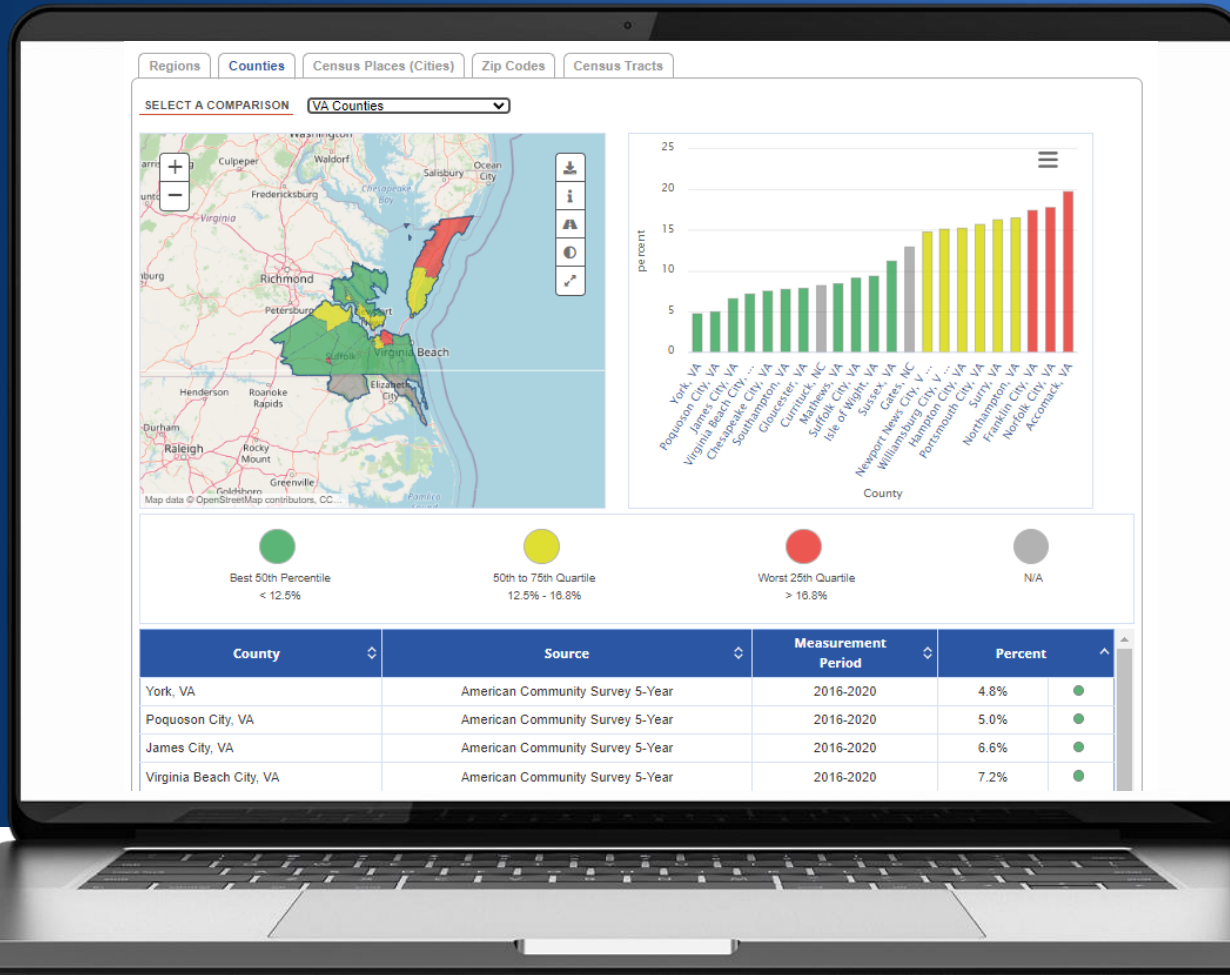
- Compare local values to targets and state and national benchmarks
- Customizable and curated dashboards
- Quick insights and visualizations

# Indicator Pages for Deeper Insights



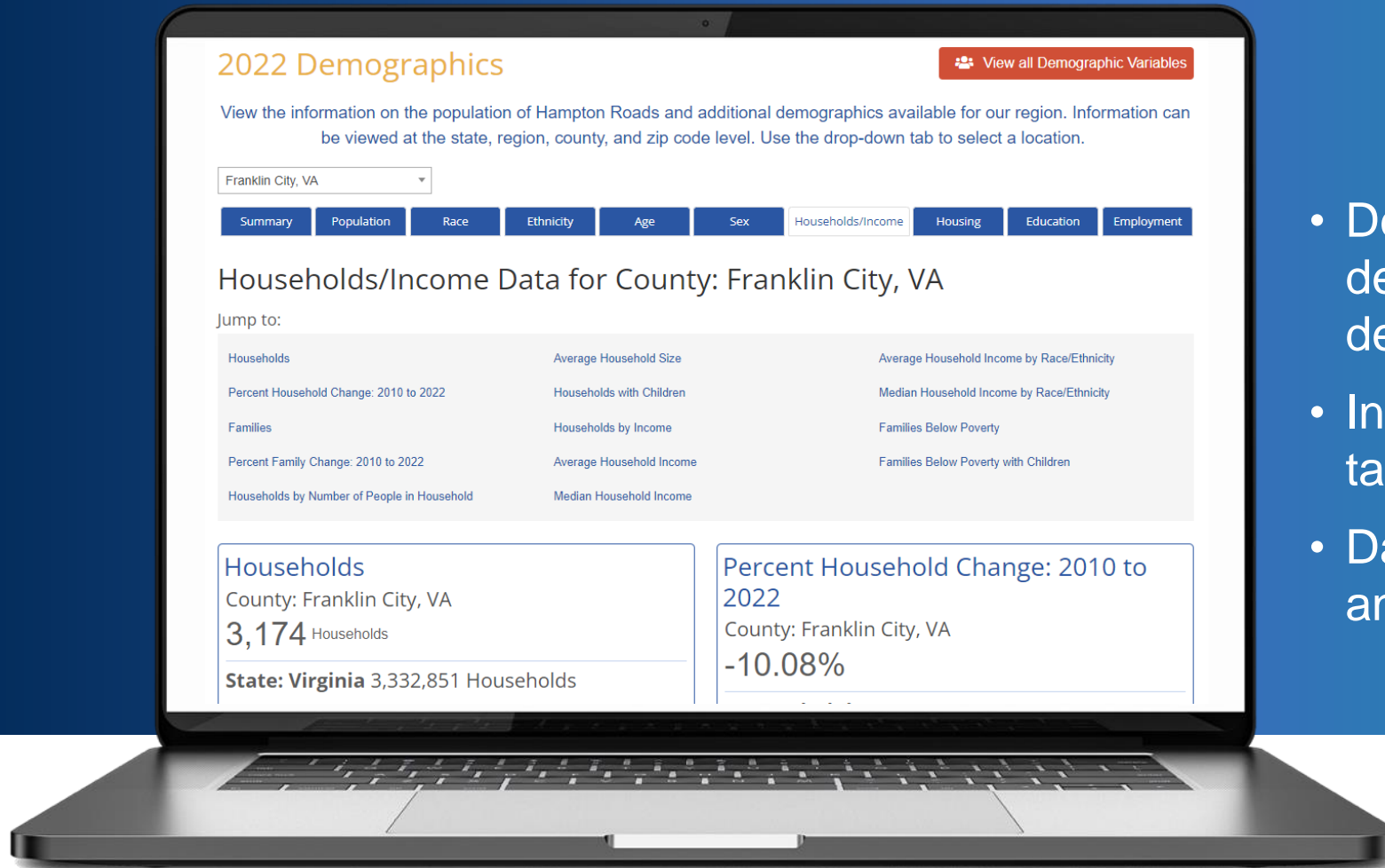
- Detailed insights for 200+ indicators
- See trend over time
- Data by demographic breakout
- Identify disparities

# Interactive Mapping



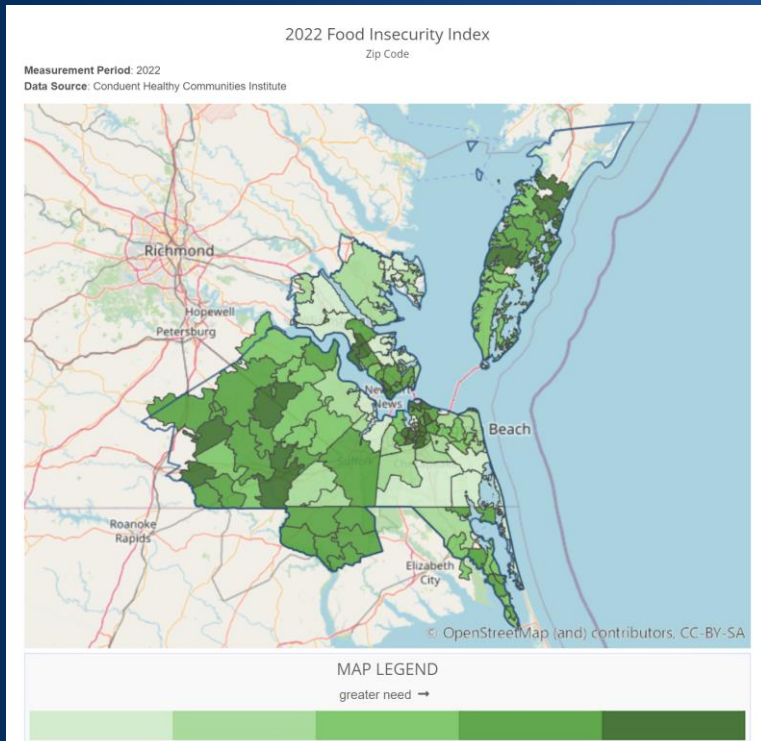
- Automated comparisons by state and national benchmarks
- Downloadable as JPEG and PDF
- Interacts with bar chart, Excel file and data downloadable as CSV

# Demographic Dashboard

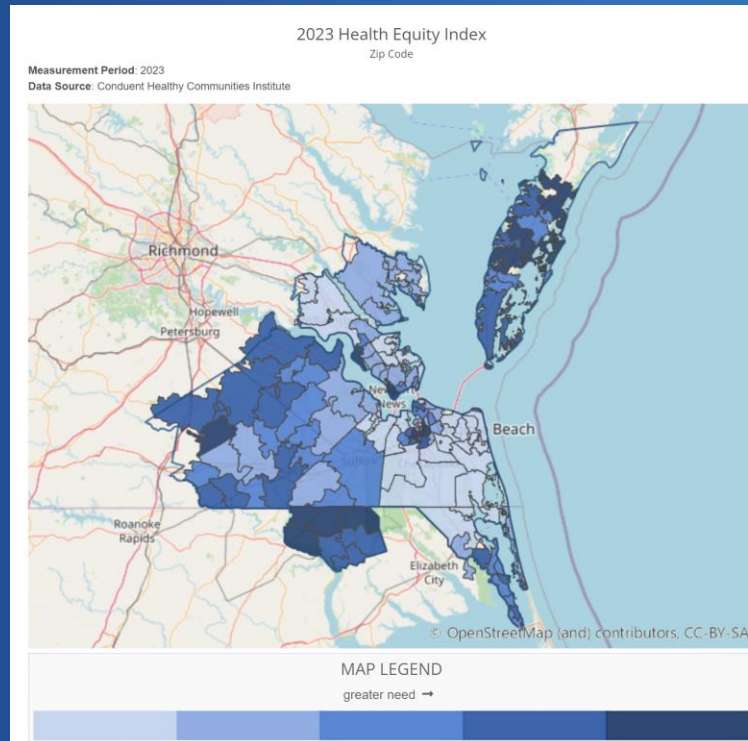


- Detailed insights for 250 demographic and social determinants of health indicators
- Interactive maps, charts, and tables
- Data by state, region, county, and zip code

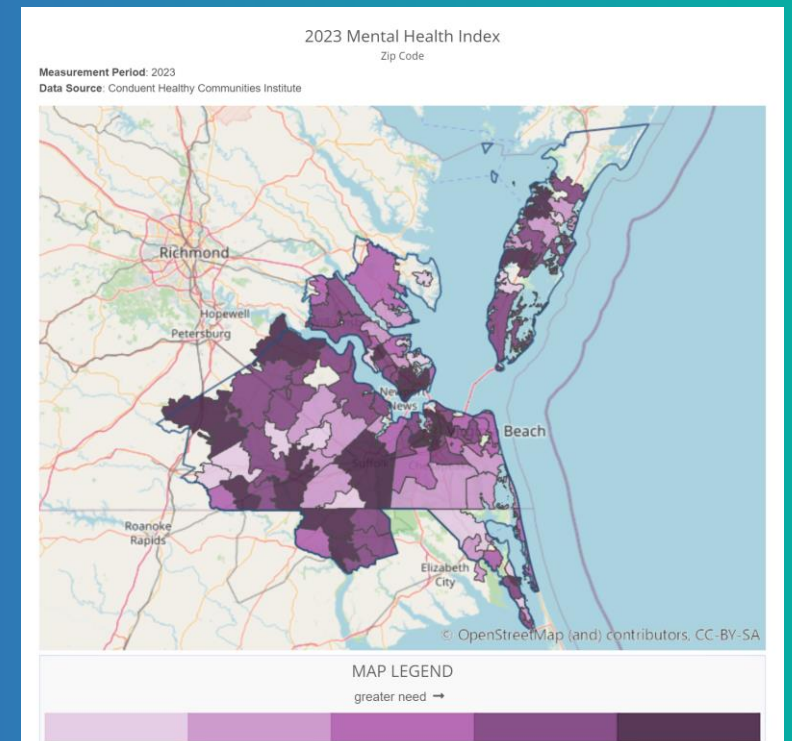
# SocioNeeds Index<sup>®</sup> Suite



**Food Insecurity Index**



**Health Equity Index**



**Mental Health Index**

# SocioNeeds Index<sup>®</sup> Suite

## Food Insecurity Index



- A measure of food access correlated with economic and household hardship
- Considers validated indicators to identify areas at highest risk for experiencing food insecurity

## Health Equity Index



- A measure of social determinants correlated with preventable hospitalizations and premature death
- Considers validated indicators to identify areas at highest risk for experiencing health inequities

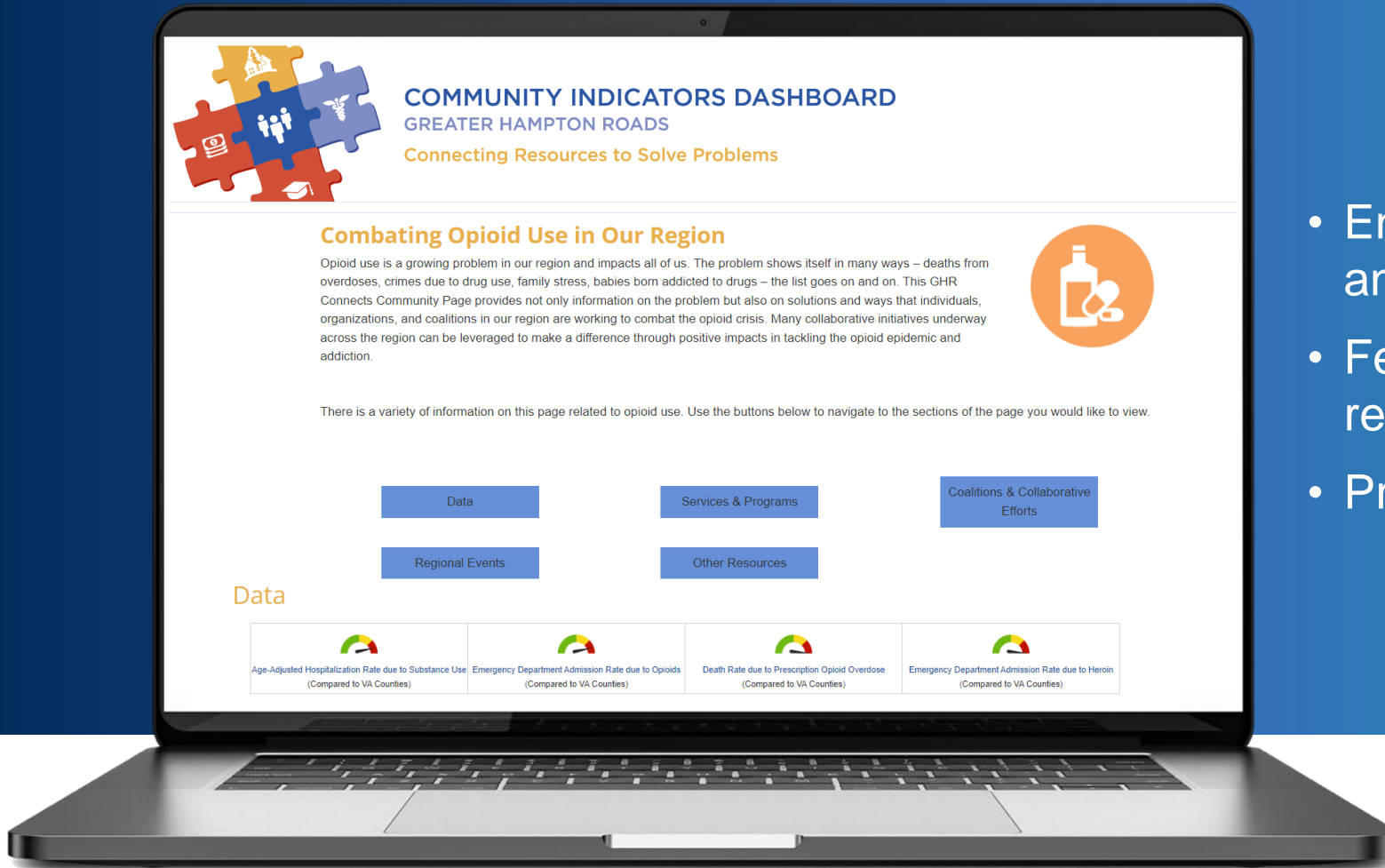
## Mental Health Index



- A measure of social determinants and health factors correlated with self-reported poor mental health
- Considers validated indicators to identify areas for prevention and early intervention

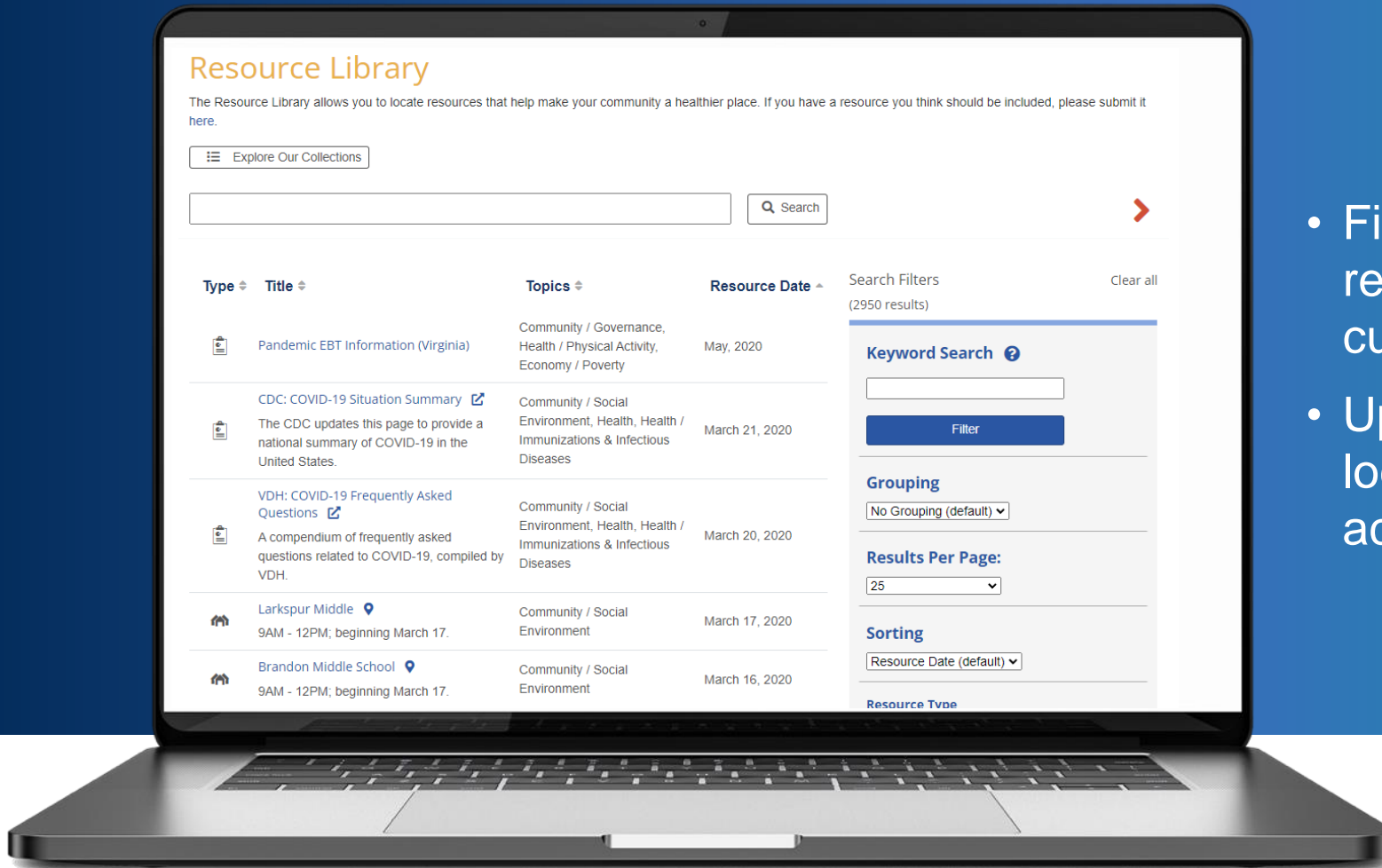


# Hub for Community Action



- Engage community members and partners
- Feature local data and resources
- Provide progress updates

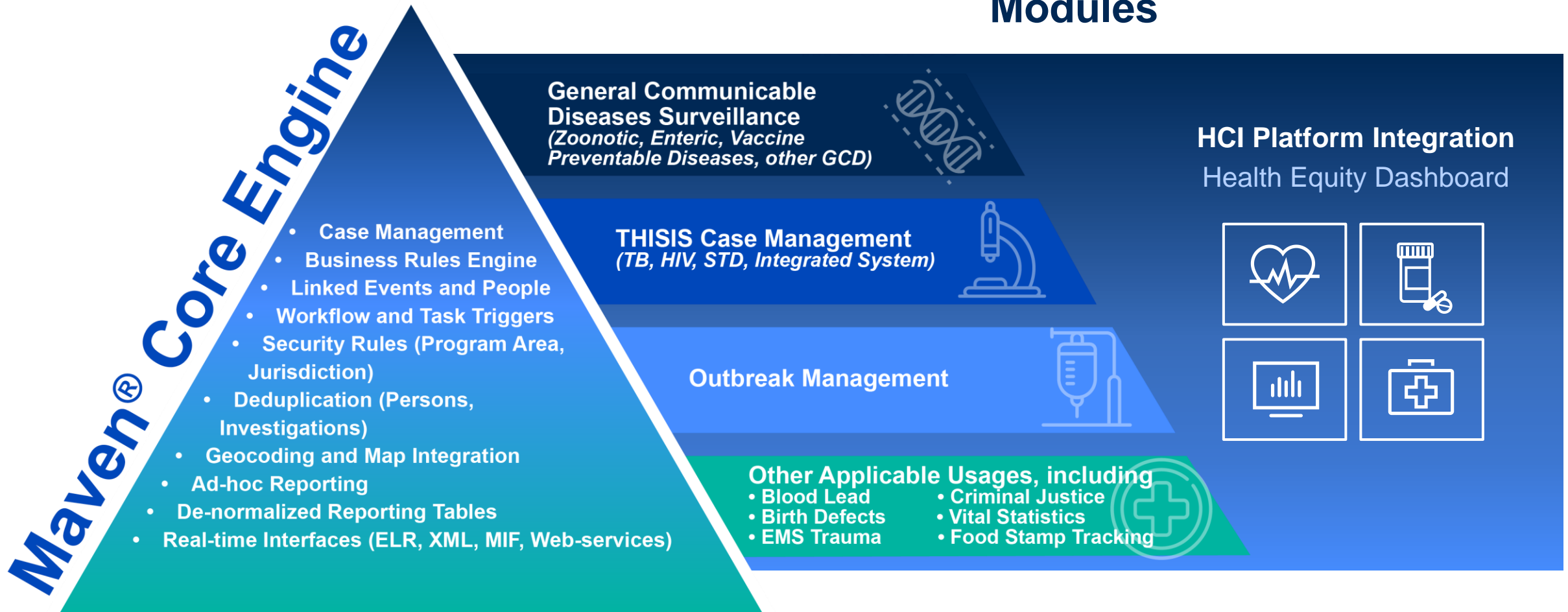
# Searchable Resource Library



- Filter or search by keyword, resource type, topic, date, or custom categories
- Upload and integrate unlimited local reports, events, and activities

# Maven<sup>®</sup> Solution

## Modules



# Questions



# CONDUENT



The proprietary contents of this presentation are intended solely for use in the procurement process and may not be disclosed except to persons who are involved in the evaluation of the proposal or award of the contract. The contents may not be duplicated, used, or disclosed in whole or in part for any purpose except the procurement process. Release of Conduent proprietary, confidential, and trade secret information would place Conduent at a serious and irreparable competitive disadvantage in future procurements by providing competitors with information that Conduent maintains strictly confidential and which is unavailable to any third-party except under restrictions contained in a nondisclosure agreement or protections that cover this information under applicable law. If a third-party makes a request for disclosure of any of the contents of this proposal, you are requested to notify Conduent immediately so that Conduent will have an opportunity to provide assistance in protecting the proprietary contents of this proposal from unauthorized disclosure.