



# Daily Planet

## ***MISSION STATEMENT***

*To strengthen and enrich the lives of those who are homeless, potentially homeless, or are lacking the social, emotional and financial resources to create stable lifestyles.*



# Daily Planet Program Overview

---

- Safe Haven
- Intensive Case Management Services
- Primary Health Care Clinic

# Safe Haven

- 22-bed transitional housing facility serving mentally ill and chronically homeless men and women
- Since 2004 served 40+ individuals
- Comprehensive service plan addresses areas of mental health, substance abuse, medical issues, housing, livelihood, life skills and social support

# Case Management Services

4 case managers and 2 certified substance abuse case managers connect individuals with the following Daily Planet services:

- Medical care
- Dental care
- Eye care
- Mental health treatment
- Project STRIVE

# Case Management Services Continued

---

- Substance abuse services, groups and/or residential treatment
- Housing
- Benefits acquisition
- Income management (escrow and representative payee services)
- Concrete Services

# Project STRIVE

---

- Job training and readiness program in partnership with UR and the private business community
- 100 homeless individuals enrolled in training last year
- 85% of graduates obtained employment upon graduation

# Concrete Services

---

- Laundry
- Showers
- Clothes Closet
- Mail Services
- Banking Services

# Health Care Center

- *ONLY* freestanding Health Care for the Homeless Center in Virginia serving the homeless, uninsured and underinsured regardless of ability to pay
- Medical Clinic
- Dental Clinic
- Eye Care Clinic
- Mental Health Clinic
- Approximately 18,000 patient visits in 2005-2006

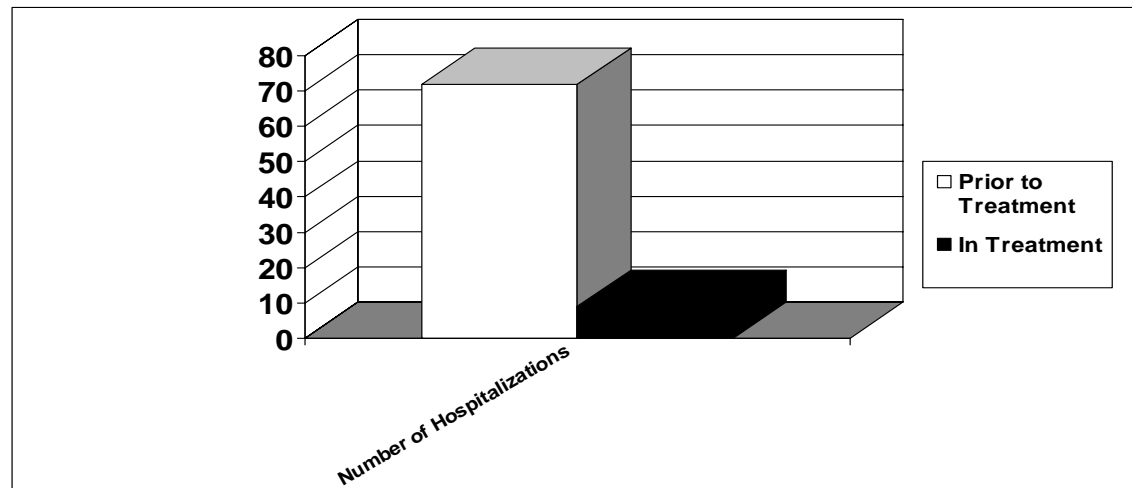


# Mental Health and Psychiatric Services

Staff of 2 psychiatrists, a psychiatric nurse practitioner, and 5 licensed clinicians provide:

- Mental health assessments
- Individual therapy/counseling
- Couples, family and domestic violence therapy/counseling
- Medication management and prescriptions
- Continuing psychiatric evaluations and treatments

# Mental Health Initiative “Hospitalizations”



**Number of Hospitalizations—baseline 40**

<b>Prior to Treatment</b>	<b>72</b>
<b>In Treatment</b>	<b>9</b>

# Community Health Systems Cost Savings

Cost to health systems—Prior to Treatment (baseline 40)

**\$300,096**

Cost to health systems—In Treatment (baseline 40)

**\$37,512**

Cost savings for 6 months

**\$262,584**

Annual cost savings to health systems

**\$525,168**

# Mental Health Clients With Incarcerations

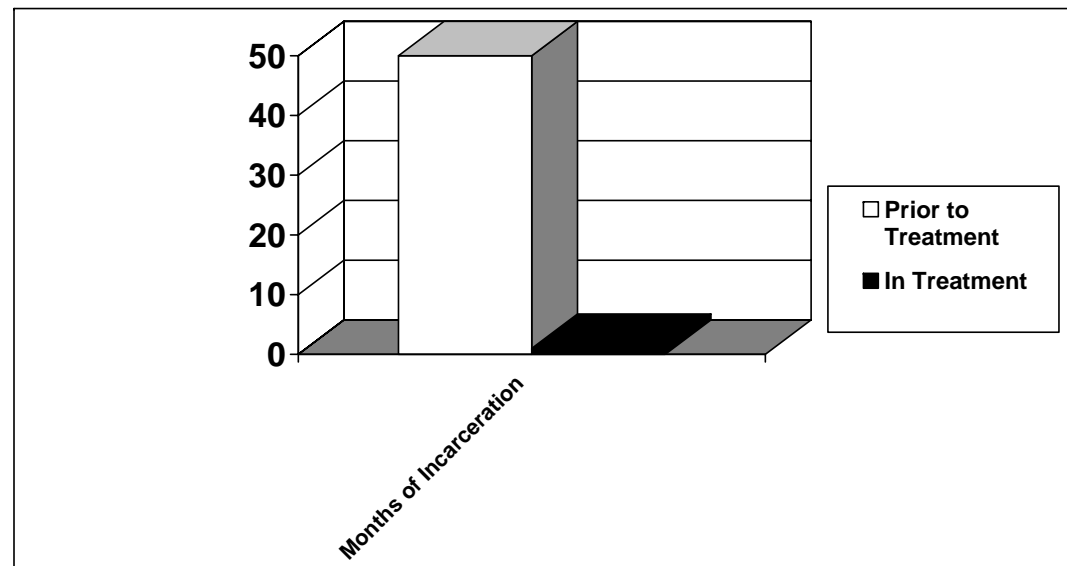
## SCOPE

Total client population with incarcerations  
98 individuals out of 251

Total months of incarcerations for 98 individuals  
271 months

# Mental Health Initiative

## “Months of Incarceration”



Months of Incarceration—baseline 20

Prior to Treatment	50
In Treatment	1

# Correctional Systems Cost Savings

Cost to local/state correctional systems

Prior to Treatment	(baseline 20)	<b>\$120,000</b>
--------------------	---------------	------------------

In Treatment	(baseline 20)	<b>\$2,400</b>
--------------	---------------	----------------

**Cost savings for 6 months**

**\$117,600**

**Annual cost savings to correctional systems**

**\$235,200**



**THANK YOU**

*FROM THE CLIENTS,  
BOARD AND STAFF OF*  
**DAILY PLANET**

