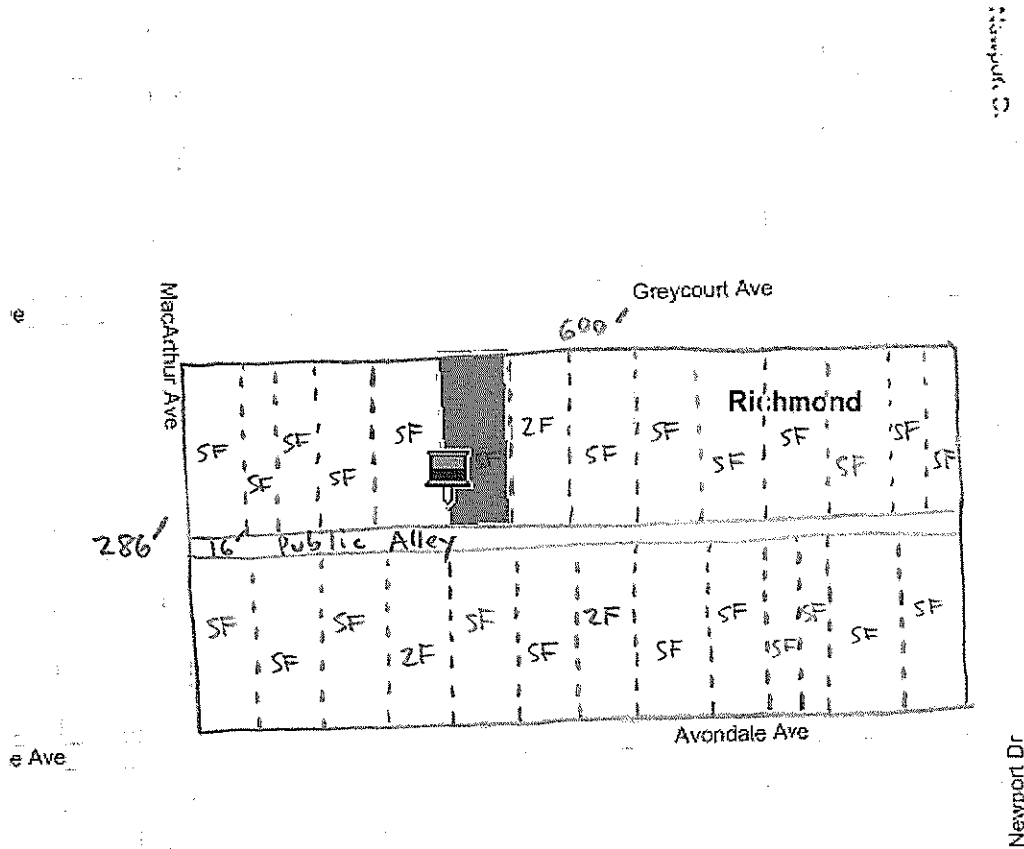




Richmond Parcel Mapper

Characteristics of a Block in North Richmond (1920s Streetcar Suburb)



Areaage

Full Block:	Public Alley:
$600' \times 286'$	$16' \times 600'$
$171,600 \text{ sf}$	$9,600 \text{ sf}$
$- 9,600 \text{ sf}$	
$162,000 \text{ sf}$	
$\div 43,560 \text{ sf/ac}$	
<u><u>3.72 ac</u></u>	

Units

	Total Units
24 SF bldgs. =	24
3 duplex bldgs. =	+ 6
	<u><u>30</u></u>

Net Density

30 units
$\div 3.72 \text{ ac}$
<u><u>8.06 \text{ units/ac}</u></u>

Typical Lot Dimensions

$50' \times 135' = 6,750 \text{ sf}$
$25' \times 135' = 3,375 \text{ sf}$

© 2009 Microsoft Corporation © 2009 NAVTEQ © AND



lon: -77.45841443538666 lat: 37.58689026016666



lon: null lat: null