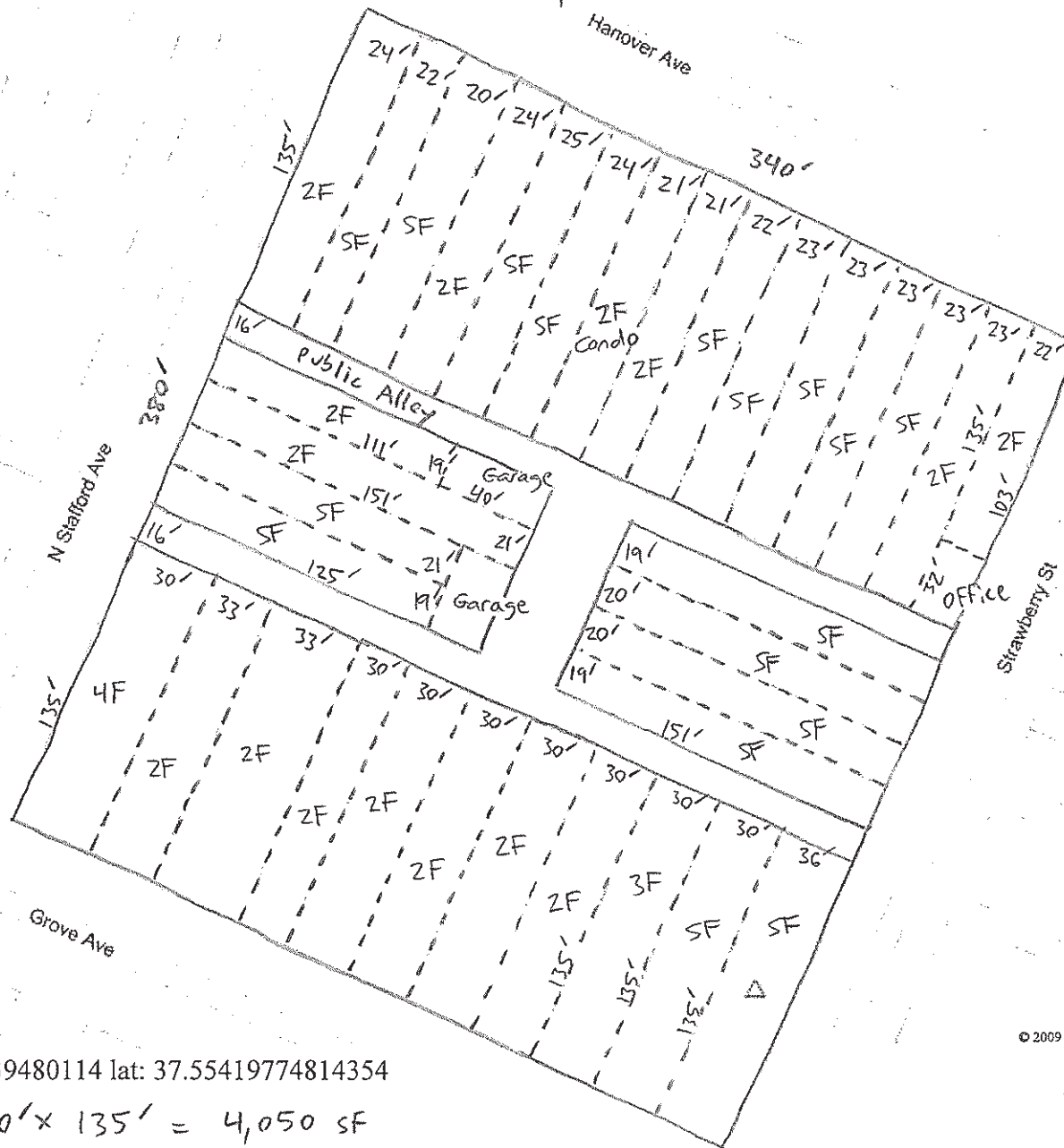


# Characteristics of a Block in the Fan District of Richmond (Early 1900s Victorian Residential District)



Units per city Assessment Data

Bldg. Type	#	Total Units
SF	17	17
2F	15	30
3F	1	3
4F	1	4
		<u>54 *</u>

Area

$$\begin{aligned}
 &340' \times 380' \\
 &= 129,200 \text{ SF} \\
 &- 13,688 \text{ SF pub alleys} \\
 &= 115,512 \text{ SF} \\
 &\div 43,560 \text{ SF/acre} \\
 &= 2.65 \text{ ac}
 \end{aligned}$$

Net Density

$$\begin{aligned}
 &54 \text{ units} \\
 &\div 2.65 \text{ ac} \\
 &= 20.38 \text{ units/acre}
 \end{aligned}$$

© 2009 Microsoft Corporation © 2009 NAVTEQ © AND

lon: -77.469639480114 lat: 37.55419774814354

Typical Lot Dimensions

30' x 135'	= 4,050 SF
23' x 135'	= 3,105 SF
20' x 151'	= 3,020 SF

\* Note: The U.S. Census reports 61 total units in this block, which computes to 23.02 units/acre



lon: -77.46966898441314 lat: 37.55420625371903



lon: null lat: null