

Interstate 73
Joint Subcommittee
November 10, 2014

Richard L. Walton, Jr.
Chief of Policy

I-73 National View:

I-73 was identified by the U.S. Congress as a high priority corridor in the federal transportation funding bill of 1991, the Intermodal Surface Transportation Act (ISTEA).

I-73 was defined as a north-south corridor from north of Detroit to Charleston, S.C.

VDOT launched a feasibility study for the portion of I-73 from Roanoke to the North Carolina line in late 1993.

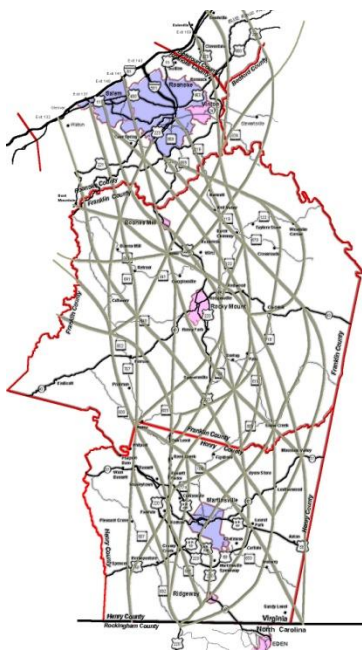


Project History in Virginia

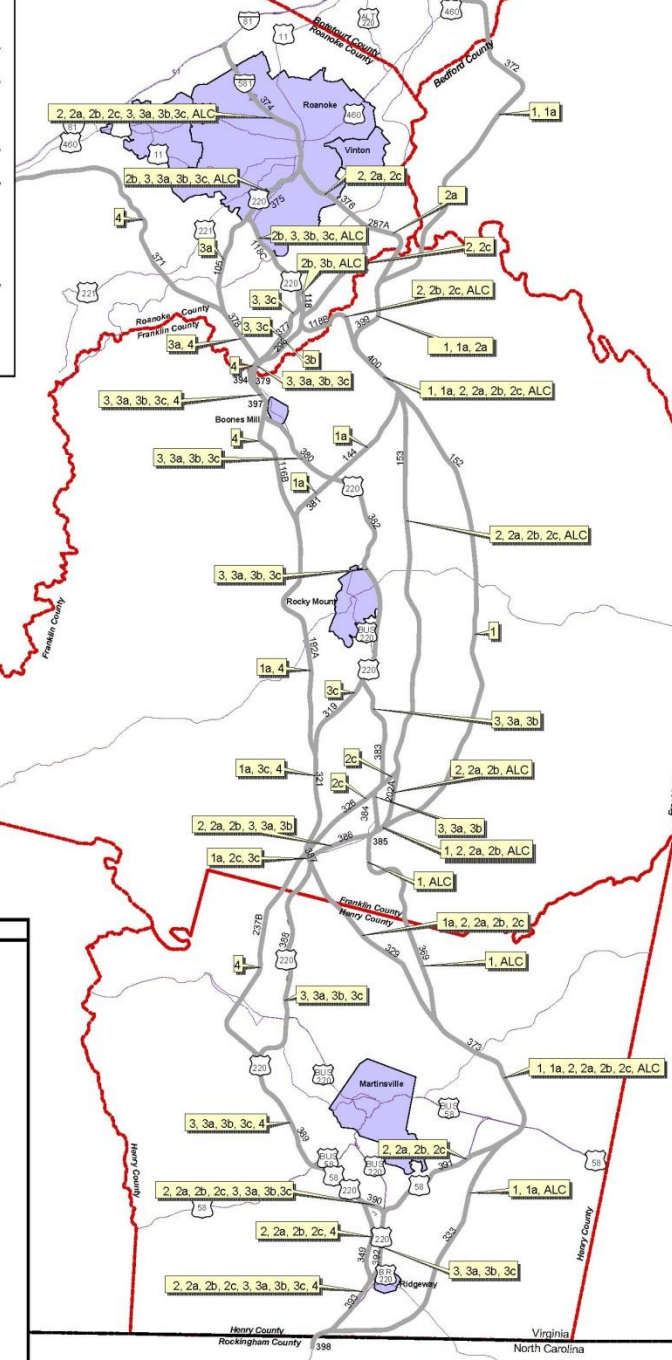
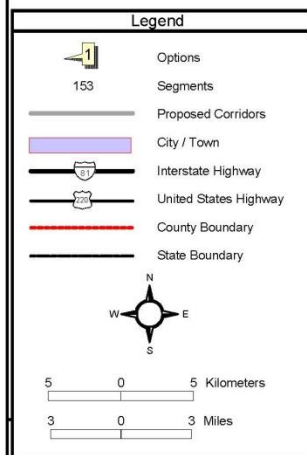
- 1990s** **Feasibility study to identify general location of corridor in Virginia**
- 1997** **Initiation of NEPA work**
- 2000** **Draft Environmental Impact Statement (EIS) issued**
- 2001** **Commonwealth Transportation Board's initial approval of location of I-73 from the Virginia/North Carolina State Line to Interstate 81**
- 2006** **Final EIS approved**
- 2007** **ROD issued for Approved Location Corridor (ALC)
Plaintiffs file a lawsuit over the I-73 ROD**
- 2008** **VDOT directed by Commonwealth Transportation Board to evaluate an alternate alignment in Henry County**
- 2009** **Federal case heard and favorable ruling for I-73 ROD**
- 2012** **Alternate alignment in Henry County approved**

Interstate 73: Corridor Development

During a very extensive public involvement process, VDOT considered a myriad of possible corridors for I-73.



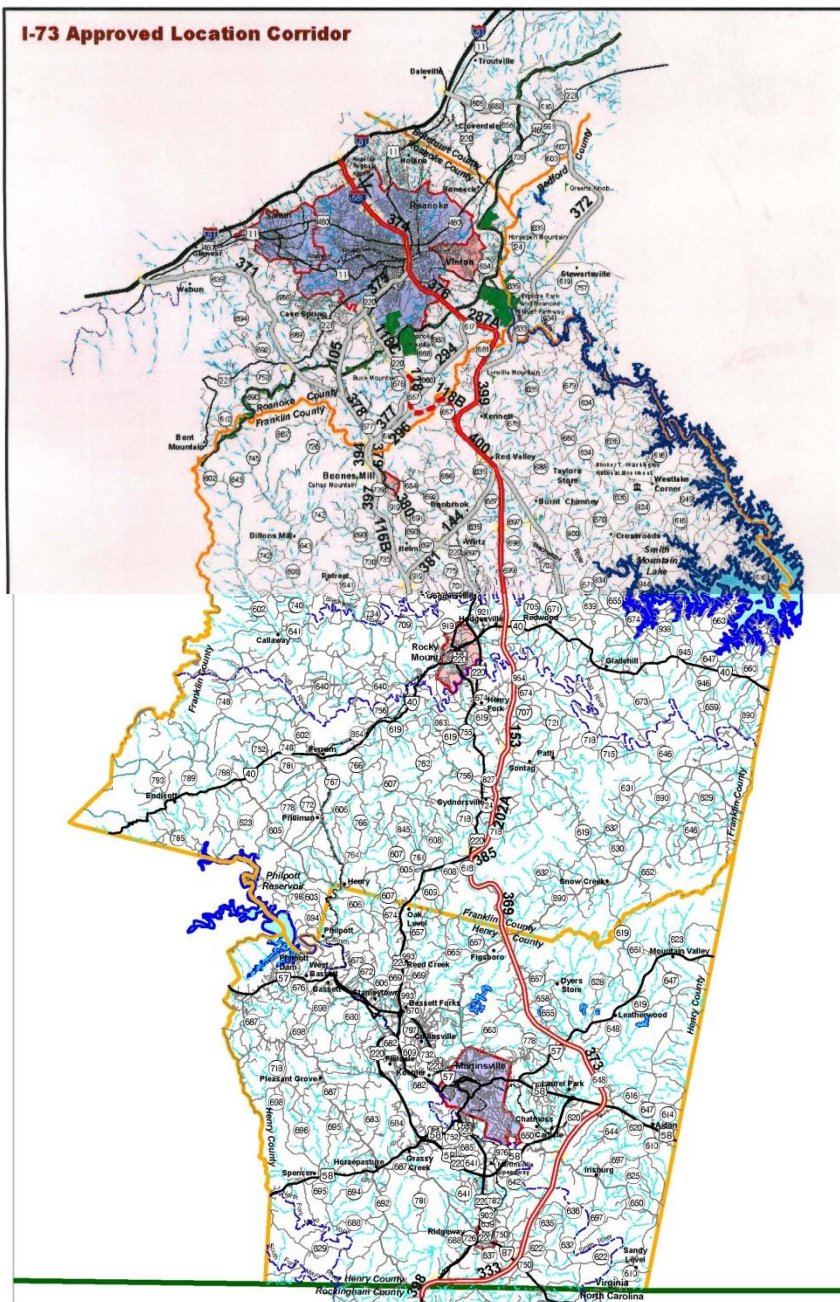
Option 1a	- 372, 399, 400, 144, 381, 192A, 321, 387, 329, 373, 333, 398
Option 2	- 374, 376, 294, 118B, 400, 153, 202A, 385, 386, 329, 373, 391, 380, 349, 393, 398
Option 2a	- 374, 376, 287A, 399, 400, 153, 202A, 385, 386, 329, 373, 391, 380, 349, 393, 398
Option 2b	- 374, 375, 118C, 118, 118B, 400, 153, 202A, 385, 386, 329, 373, 391, 380, 349, 393, 398
Option 2c	- 374, 376, 294, 118B, 400, 153, 326B, 326, 387, 329, 373, 391, 380, 349, 393, 398
Option 3	- 374, 375, 118C, 377B, 377, 379, 387, 380, 382, 383, 384, 386, 388, 389, 390, 392, 393, 398
Option 3a	- 374, 375, 105, 378, 379, 387, 380, 382, 383, 384, 386, 388, 389, 390, 392, 393, 398
Option 3b	- 374, 375, 118C, 118, 296, 379, 397, 380, 382, 383, 384, 386, 388, 389, 390, 392, 393, 398
Option 3c	- 374, 375, 118C, 377B, 377, 379, 387, 380, 382, 319, 321, 387, 388, 389, 390, 392, 393, 398
Option 4	- 371, 378, 394, 397, 116B, 192A, 321, 237B, 380, 349, 393, 398
ALC	- 374, 375, 118C, 118, 118B, 400, 153, 202A, 385, 369, 373, 333, 398



Interstate 73: CTB Approved Alignment #2

Second CTB Approved Location
June 21, 2001

Moves southern portion of the route
further east.

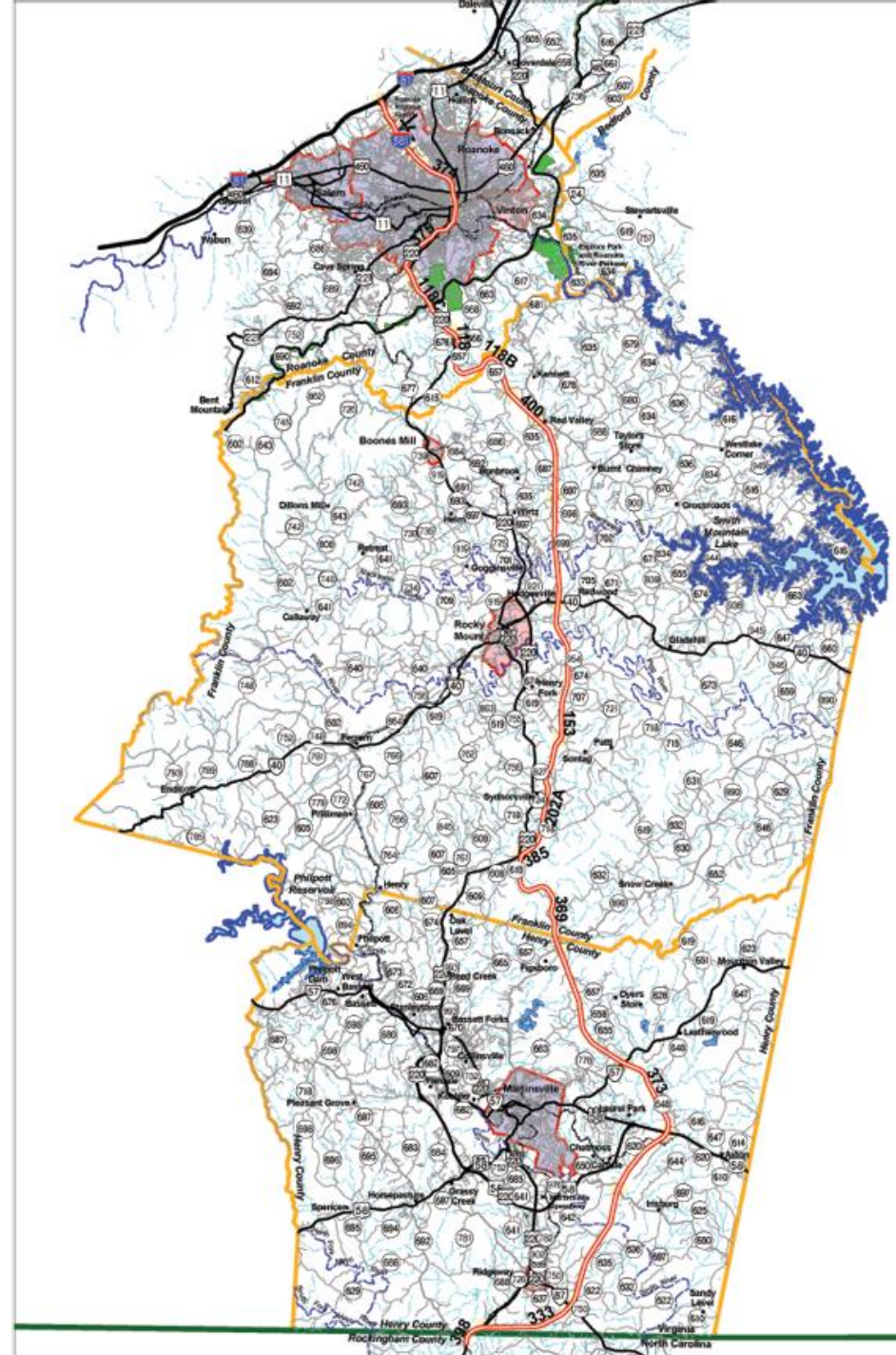


Interstate 73: CTB Approved Alignment #3

Third CTB Approved Location
June 21, 2003

Included a change to the northern portion of the corridor.

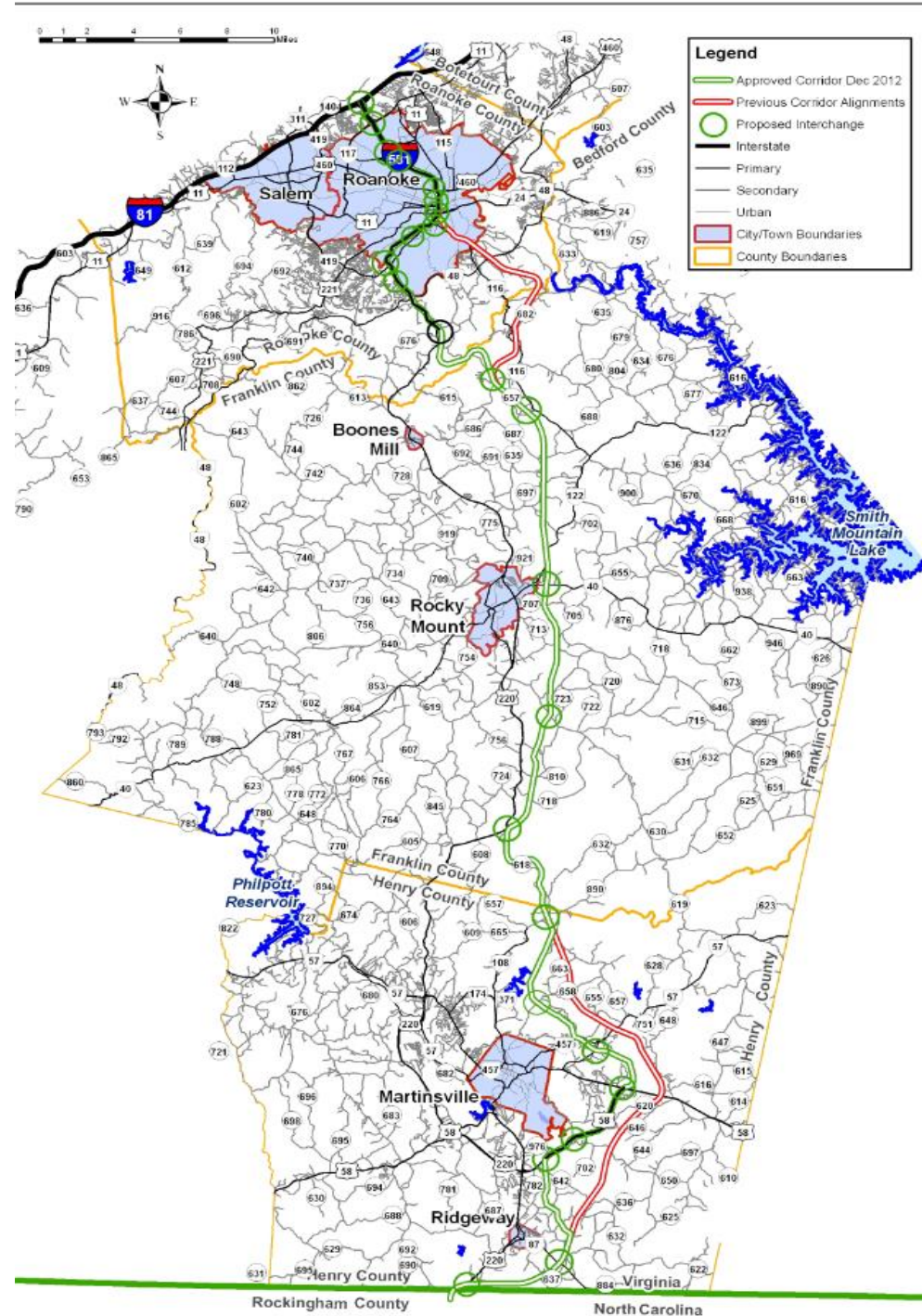
- Required due to determination that the “Southeast Roanoke Neighborhood District” was eligible for inclusion in the National Register of Historic Places



Interstate 73: CTB Approved Alignment #4

**Fourth CTB Approved Location
June 15, 2011**

**Included shift in Henry County
to better serve existing and
future businesses and to foster
economic development
potential.**



Financial Information

TEA-21 Earmark

- **VA045 - Conduct Preliminary Engineering on I-73 between Roanoke and Virginia/North Carolina Line**
- **UPC 16596 – Rte. 73 – Proposed Corridor Location Alignment – PE only - \$3,776,194 available**

Financial Information

SAFETEA-LU Earmarks

- **VA176 – Construct 3.6 miles of Interstate 73 near Martinsville**
- **VA214 – Construct I-73 near Martinsville**
- **UPC 80057 – Rte. 73 - Near Martinsville – PE Only – \$8,524,394 available**
- **VA178 – Engineering and Right-of-Way for Interstate 73 in Roanoke County**
- **VA227 – Engineering and Right-of-Way for Interstate 73 in Roanoke County**
- **UPC 80056 – Rte. 73 – Roanoke County - Partial PE - \$2,462,799 available**

Financial Information

Remaining Earmarks for Preliminary Engineering and Construction

Total - \$14.7m

I-73 Cost Estimate from Roanoke to North Carolina Line

PE - \$355M

RW - \$535M

CN - \$3,143M

Total - \$4,033M

Thank you.